



NORTH AREA COMMITTEE



AGENDA

To: City Councillors: Todd-Jones (Chair), Bird (Vice-Chair), Abbott, Austin, Gawthrope, O'Reilly, Perry, Price, Sarris, Sargeant, Smart and Tunnacliffe

County Councillors: Manning, Onasanya, Sales and Scutt

Dispatched: Wednesday, 22 February 2017

Date: Thursday, 2 March 2017

Time: 6.00 pm

Venue: Shirley Primary School, Nuffield Road, Cambridge CB4 1TF

Contact: Toni Birkin

Direct Dial: 01223 457013

Cambridge City Council's Draft Community Centres Strategy

There is a Public Consultation running until 12 noon on 5th May on Cambridge City Council's Draft Community Centres Strategy. Further information and the survey is available [here](#) on the council's website. There will be a drop in session before the main committee meeting for people to find out more and speak to officers about the proposals in the draft Community Centres Strategy.

Timings are included for guidance only and cannot be guaranteed

- 1 Apologies for Absence**
- 2 Welcome and Introduction (including Declarations of Interest)**

COMMUNITY FORUM – JOIN IN THE DISCUSSION ABOUT THESE ITEMS

3 You Want to Know (Open Forum) 6.10PM

4 Cambridgeshire Police and Crime Commissioner, Jason Ablewhite 6.40PM

North Area Committee is pleased to welcome Cambridgeshire Police and Crime Commissioner, Jason Ablewhite who will give a brief presentation and will then take questions.

'YOU SAID, WE DID, YOU WANT TO KNOW'

5 Matters and Actions arising from the Minutes (Pages 5 - 40) 7.10PM

6 Updates on New Station 7.30PM
Project updates from:

Christine Light, Programme Development Manager and Joe Smith, Project Manager of Network Rail.

Richard Turner, Alan Neville and Paul Stannard of Greater Anglia.

INTERMISSION

ITEMS FOR DECISION

7 2016/17 S106 Priority-Setting Round NAC (Pages 41 - 58) 8.30PM
Tim Wetherfield
Urban Growth Project Manager

8 Building Stronger Communities – Community Centres Strategy (Pages 59 - 68) 8.50PM
Jackie Hanson
Community Funding & Development Manager Community Services

9 NAC Area Committee Grants 2017-18 (Pages 69 - 80) 9.10PM
Jackie Hanson
Community Funding & Development Manager Community Services

- | | | |
|-----------|--|------------|
| 10 | Environmental Reports - NAC (<i>Pages 81 - 102</i>)
Briefing Note | N/A |
| 11 | Community Events and Consultation Opportunities (<i>Pages 103 - 104</i>)
For information only. | N/A |

Meeting Information

- Open Forum** Members of the public are invited to ask any question, or make a statement on any matter related to their local area covered by the City Council Wards for this Area Committee. The Forum will last up to 30 minutes, but may be extended at the Chair's discretion. The Chair may also time limit speakers to ensure as many are accommodated as practicable.
- Filming, recording and photography** The Council is committed to being open and transparent in the way it conducts its decision making. The public may record (e.g. film, audio, tweet, blog) meetings which are open to the public.
- Facilities for disabled people** Level access is available at all Area Committee Venues.
- A loop system is available on request.
- Meeting papers are available in large print and other formats on request prior to the meeting.
- For further assistance please contact Democratic Services on 01223 457013 or democratic.services@cambridge.gov.uk.
- Queries on reports** If you have a question or query regarding a committee report please contact the officer listed at the end of relevant report or Democratic Services on 01223 457013 or democratic.services@cambridge.gov.uk.
- General Information** Information regarding committees, councilors and the democratic process is available at <http://democracy.cambridge.gov.uk/>
- Mod.Gov App** You can get committee agenda and reports for your tablet by using the mod.gov app

NORTH AREA COMMITTEE

15 December 2016

6.30 - 9.10 pm

Present: Councillors Todd-Jones (Chair), Bird (Vice-Chair), Abbott, Austin, Gawthrop, O'Reilly, Price, Sarris, Sargeant, Smart, Manning and Scutt

Councillor Austin arrived after the vote on item 16/50/NAC

Officers Present

Operations Manager – Community Engagement and Enforcement: Wendy Young

Senior Engineer: John Richards

Anti-Social Behaviour Officer: Louise Walbank

Business Development Manager: Kim Murray

Committee Manager: Toni Birkin

Committee Manager: James Goddard

Also Present:

Sergeant Mišík

FOR THE INFORMATION OF THE COUNCIL

16/46/NAC Apologies for Absence

Apologies were received from Councillors Onasanya, Perry, Sales and Tunnacliffe. Also Jonathan James (Lead Officer).

16/47/NAC Welcome and Introduction (including Declarations of Interest)

No declarations of interest were made.

Councillor Price proposed, and Councillor Gawthrop seconded, the nomination of Councillor Bird as Vice Chair.

Resolved (by 8 votes to 0) that Councillor Bird be Vice Chair for the ensuing year.

16/48/NAC To Confirm What was Said (Minutes) at the Last Meeting and What we Have Done (Action List)

The minutes of the meeting held on 15 September 2016 were approved as a correct record and signed by the Chair.

ACTION	LEAD OFFICER/MEMBER	TIMESCALE	PROGRESS
14/26/NAC - Tree roots opposite Co-op Green End Road causing trip hazard	Councillor Manning		<p>Update: Additional tree has been added to the list for remedial work but the item is still on-going.</p> <p>Further update: given the cost and the fact that there is now an EIP in that area, and a project I have got added to the Northern Area Corridor Transport Plan pot, it will be done as part of one of these. Officers have confirmed this won't affect either project (in terms of adding extra cost or stopping elements from being done).</p> <p>Update 5 Dec 14 Cllr Manning : Initial site visit completed and this matter will be included in a wider feasibility study of the area.</p> <p>Update 15 Dec 2014 Cllr Manning: Work has been delayed but the issue is still ongoing.</p>

		<p>Update 20 Jan 2015 Cllr Manning: Feasibility study still being written.</p> <p>Update 9th April Cllr Manning A residents meeting had been held and a decision on future action is expected to be considered post-election.</p> <p>Update 14th August Cllr Manning Waiting for designs to be completed by SKANSA.</p> <p>Update 20th January Cllr Manning This matter is being address with other issues in the area. The action to be retained for further update</p> <p>Update 31 March Cllr Manning This matter was progressing along with the rest of the City Deal consultations.</p> <p>Update 9 June Cllr Manning City Deal meeting earlier today discussed this issue</p>
--	--	--

			<p>Update 15 December 2016 Cllr Manning City Deal scheme may go forward in January 2017. Maybe resolved by March? Retain on action sheet for the present.</p>
<p>14/65/NAC</p> <p>Parking restriction in De Freville area and impact around Milton Rd Library</p>	<p>Cllr Scutt</p>		<p><u>18 December 2014,</u> <u>Cllr Scutt</u> Regarding Parking Restrictions steps have been taken to place double yellow on the corners of all the inter sections Milton Road. County Council are appointing an Officer to look at parking in Cambridge and the problems that residents experience to determine safe parking.</p> <p>Would investigate the possibility of four hour parking restrictions in this area as requested by Mr Sergeant at the December meeting.</p> <p><u>3 Feb 2015 Update</u> <u>Cllr Scutt</u> From County Officers:</p>

			<p>With regards to Milton Road Library parking, whilst it would not be permissible to restrict a parking space solely for library use, the County can restrict the duration of stay to say one hour to prevent long term parking and introduce some turn-over of vehicles utilising the parking bay.</p> <p>This would involve an amendment to the traffic regulation order (TRO) and the installation of additional signage, so there would be a cost associated with this work which would need to be borne by a third party - that is residents or need to secure funding from alternative sources.</p> <p>Update 9th April Councillor Scutt Has discussed this with County Council Officers and options under are consideration including Pay and Display bays,</p>
--	--	--	--

		<p>Update 10th September Councillor Scutt County transport officers advised that it would not be possible to have dedicated parking bays for the library. Restricting parking to two hours in the area would require a Traffic Regulation Order and would include a wider area.</p> <p>Update 19th November Councillor Scutt Double yellow line work due to for early next year.</p> <p>Update 31st March Councillor Scutt Cllr Scutt stated that this issue was still on going, the Cambridge Joint Area committee was working on the issue of parking generally and she wanted a solution for the whole of Cambridge.</p> <p>Double yellow lines are in the queue, two new officers have been appointed and expect work will be done in due course.</p>
--	--	--

			<p>Update 15 December 2016 Cllr Scutt</p> <p>Legal advice suggested that temporary parking restrictions may not be appropriate due to safety reasons eg the impact on emergency vehicle access. The Joint Area Committee was currently looking at parking in residential areas and would review these in its January 2017 meeting. Any recommendations passed maybe considered by the March Highways meeting. Retain on action sheet for the present.</p>
<p>15/4/NAC Q2 To investigate with property services: area around Tesco's continues to be untidy. There is a large, uncovered, wire cage style litter bin, and rubbish gets blown about.</p>	Councillor Price		<p>Property Services are in the process of renewing the lease to Tesco and as part of this they will be leased an additional area at the rear of the shops where their cages are and will be erecting a simple store with flat roof (subject to landlord's approval of the design and planning approval).</p>

		<p>Their cages will be installed in the area and this should be tidier and eliminate blown rubbish. The rear access road is just for Tesco and the takeaway for deliveries but not, longer term parking. The tenants are responsible to ensure the access is not blocked and control rubbish etc. We will pick up these issues with them.</p> <p>16 June 2015 Retrospective planning application on-going.</p> <p>Update 10th September Councillor Price Councillor Price stated that work to improve was underway. He would push to have the double yellow lines in the area reinstated.</p> <p>Update 31 March Councillor Price The area had been re-surfaced recently and was waiting to hear when lines would be re-instated. There had been no</p>
--	--	---

		<p>complaints about rubbish and wanted to retain until the lines had been re-instated.</p> <p>Update 15 December 2016 Cllr Price Retain on action sheet until the lines had been re-instated.</p> <p>Leila Dockerill said cars were holding up lorries in the evening near Tesco's.</p>
15/17/NAC Sharing 'Open Data' to assist with the setting of Area Committee Police Priorities	Councillor Manning and Councillor Todd-Jones	<p>Councillor Manning has agreed to take this forward and will be arranging a follow up meeting.</p> <p>Update Sept This will be discussed at the next meeting when the Police are present.</p> <p>Update 15 December 2016 Cllr Manning No action to date. Retain on action sheet for the present.</p>
16/04/NAC Q5 Chesterton Recreation Ground toilets often locked: why?	Councillor Manning undertook to raise with Councillor Johnson	<p>Update 15 December 2016 Cllr Manning Gent's toilets were generally open, but the ladies were not. Cllr Manning to</p>

			investigate on behalf of Mr Bond / Chesterton Eagles Football Club. Retain on action sheet for the present.
16/19/NAC Meadows Community Centre	Jackie Hanson to have dialogue with Histon and Impington Parish Council with regards to Meadows Community Centre.		<p>Update 9 June Cllr Todd-Jones undertook to investigate further.</p> <p>Update 15 December 2016 Cllr Todd-Jones Undertook to investigate further as no information available to date. Retain on action sheet for the present.</p>
16/21/NAC Q1 Adshel Bus Shelter	Cllr Todd-Jones and John Richards to request that Adshel provide a replacement Bus Shelter.		<p>Adshel/Clearchannel hoping to replace bus shelter with a refurbished shelter.</p> <p>Update 15 December 2016 Cllr Bird Bus shelter now in place. Remove from action sheet.</p>
16/30/NAC Q1	Councillor Onasanya		<p>Investigate street lights in Callander Close.</p> <p>Post meeting update: The County Strategic Projects Officer has advised their street lighting faults database has been checked and they</p>

			<p>have not had any faults reported for this road since February 2015. Balfour Beatty have also advised they do not have any outstanding customer issues at present.</p> <p>Update 30th Aug 2016 Liaising with Paul Payne at Balfour Beatty to see what (if anything) can be done to eradicate the dark areas highlighted in the plan sent by the constituent.</p> <p>Update 20 September 2016 Unfortunately we are unable to change the type of lantern which has been installed due to the specification requested by Cambridge county council. We understand that there will be areas with darker spots where lights have been removed due to the 10% reduction on residential roads.</p>
--	--	--	---

			<p>As there is no liable obligation for the council to provide any Streetlighting on residential roads this is unfortunately where the lights are being removed from. We will therefore not be making any changes to the lighting on Callander Close.</p> <p>Update 15 December 2016 Cllr Onasanya to feedback at next NAC meeting. Retain on action sheet for the present.</p>
16/43/NAC Q1	Ward Cllrs (City and County) to action together		<p>Milton Road pavement and road surface in need of repair.</p> <p>Update 15 December 2016 Cllr Scutt City and County Councillors were working together with Milton Road Local Liaison Forum to address issues. There was funding available from the City Deal to make improvements. Retain on action sheet for the present.</p>
16/43/NAC Q5	Cllr Scutt and Cllr		Pavements to Arbury

	Onasanya		<p>Road in poor state of repair. Raise as priority.</p> <p>Contact cycle team about this matter</p> <p>Update 15 December 2016 Cllr Scutt County Officers looked at Arbury Road pavement; it was not in a state where the County Council could justify making repairs due to budget restrictions. Cllr Scutt to look at alternative funding sources to undertake work. Retain on action sheet for the present.</p>
--	----------	--	--

16/49/NAC You Want to Know (Open Forum)

Members of the public asked a number of questions, as set out below.

- 1. Richard Taylor asked if North Area Committee (NAC) could encourage the installation of defibrillators in all community buildings and that a comprehensive list be given to emergency services**

Councillor Todd-Jones said there was a defibrillator in the Guildhall, but it could not be guaranteed they were available in other meeting venues. Councillor McPherson was happy to train people on how to use them.

Action Point: Councillor Todd-Jones to liaise with Ambulance Service to ensure Emergency Services have a comprehensive list of defibrillators stored in community buildings across the city.

- 2. Richard Taylor queried which organisation was responsible for Milton Road trees.**

Councillor Todd-Jones said the City Deal were responsible.

- 3. Richard Taylor took issue with filming restrictions imposed by the Chair at the last NAC meeting.**

Councillor Todd-Jones said filming restrictions had not imposed, Mr Taylor had been asked not to film children present at the meeting.

- 4. Michael Bond asked for the damaged middle bollard on St Andrew's Rec cycle path to be replaced.**

Councillor Manning said a heavy duty bollard was required, not a standard one (ie like for like replacement) to prevent repeated damage.

Action Point: East Chesterton Ward Councillors to liaise with Mr Bond regarding replacement of damaged middle bollard on St Andrew's Rec cycle path.

- 5. Colin Davidson raised concerns about damage to his property by City Council employees on 3 occasions. He asked for a written undertaking that the City Council "would leave him alone".**

Councillor Todd-Jones said the City Council Chief Executive had written to Mr Davidson to apologise. Councillor Price added that the City Council could not guarantee it would not enter Mr Davidson's garden in future as it may need to do so in extenuating circumstances.

Action Point: Councillor Todd-Jones to pass on concerns from Mr Davidson (regarding damage to his garden by City Council Officers) to the Chief Executive and Senior Officers.

- 6. Kelley Green expressed concern about speeding traffic on Fen Road after speed bumps were removed.**

Councillor Todd-Jones said he had spoken to Officers (Chris Foyle and John Richards). New speed humps/cushions should be in place within 1 – 2 weeks of tonight's meeting. Work was expected to start the day after NAC. Speed humps/cushions were expected to be in place before bollards on the pavement to prevent people mounting the pavement to

avoid the humps. Councillors Sargeant and Smart said that bollards and humps should be put in at the same time for safety reasons. Councillor Manning said Fen Road needed resurfacing, which was why the speed humps were removed in the first place. Various contractors undertook different phases of the work to complete different tasks, hence features going in at different times.

Richard Taylor suggested councillors made dangerous driving on Fen Road, Green End Road and Chesterton High Street a Police priority after he had witnessed various incidents.

Action Point: Councillor Todd-Jones to follow up with Andrew Preston regarding Fen Road work progress query raised by Mr Taylor.

7. Kay Harris submitted a written statement raising concerns about poor lighting in the Hawks/Campkin Road area.

Councillor Scutt said the County Council recognised its policy on the dimming of street lights was detrimental and there was a proposal to return lights to full strength in future.

Action Point: Councillor Scutt to check lighting levels in the Hawks/Campkin Road area in response to residents' concerns.

Various members of the public said that low light levels, spacing between columns and poor pavement surfaces (eg uneven) were a problem across the city. The situation was exacerbated by tree foliage blocking light.

Councillor Scutt said Balfour Beatty had not implemented correct lighting levels and there was no clause in the County Council's contract through which enforcement action could be taken.

Councillor Todd-Jones said the City Council was trying to find funding to help the County Council increase lighting levels.

Councillor Manning said that Balfour Beatty had removed a net figure of 10% of lighting columns. As highways were exempt from the 10% reduction, only residential areas had lost columns. The County Council had committed to undertake a Member led review to ascertain if compensation claims had increased since lighting levels dropped.

8. **Alex Skinner asked if the County Council were obliged to review the impact of a lack of lighting on residents. Some of whom felt trapped in their own homes due to lack of street lighting.**

Councillor Manning said the County Council had no statutory responsibility to provide street lighting.

9. **Lilian Rundblad raised concerns about lack of lighting in the Borrowdale bus shelter.**

Action Point: Councillor Todd-Jones to follow up with John Parrott about lack of light concerns in the Borrowdale bus shelter.

10. **Leila Dockerill expressed concern that the #17 bus servicing Fen Road had been cancelled.**

Councillor Manning said he had contacted Stagecoach who said they were rationalising services that were making a loss. The County Council were looking at ways to plug the #17 service gap eg paying a subsidy to re-instate the service.

Councillor Bird said she had also contacted Andy Campbell (Stagecoach). He signposted #2 as an alternative service to #17. Councillor Bird thought this was impractical for Fen Road residents.

11. **Richard Taylor queried the transparency of the Local Highways Improvement process.**

Councillor Todd-Jones said applications no longer went to Area Committees but were reviewed by the County Council.

Action Point: Councillor Manning to attend Local Highways Improvement Panel in January 2017 and will pass on Mr Taylor's comments eg lack of publically available information.

12. **Richard Taylor queried if sufficient information was in the public domain for people to comment on Fen Road planting, signage and road markings.**

Councillor Todd-Jones summarised actions to date and signposted information in the public domain.

13. Richard Taylor queried if sufficient information was in the public domain regarding Milton and Histon Road remodeling.

Councillor Todd-Jones referred to the next meeting of the Local Liaison Forums.

14. Richard Taylor asked if the City Deal should be consulted in future regarding Green End Road chip shop planning applications.

Councillor Sarris said he had raised the City Deal perspective in relevant Planning Committee meetings.

Action Point: Councillor Todd-Jones to follow up with Planning Officers if City Deal should be consulted in planning applications.

16/50/NAC Policing & Safer Neighbourhoods

The Committee received a report from Sergeant Mišík regarding the policing and safer neighbourhoods trends.

The report outlined actions taken since the last reporting period. The current emerging issues/neighbourhood trends for each ward were also highlighted (see report for full details). Previous priorities and engagement activity noted in the report were:

- i. Continue with Class A drug work – this underpins much criminality and also impacts on community safety.
- ii. Monitor anti-social behaviour around Grumpy's and the Fen Road area.

The Committee discussed the following policing issues:

- i. Increased numbers of violent crime.
 - a. Sergeant Mišík said there was a general increase in crime figure trends across the country due to a change in the way figures were recorded. There was no increase in hospital admissions as a result of the extra number of crimes recorded.
- ii. Anti-social behaviour around Grumpy's and the Fen Road area was a seasonal problem that the Police were asked to monitor when the weather improved.
- iii. Installation of mobile speed camera in Ashfield Road.

Action Point: Anti-social behavior team to follow up with Police regarding installation of mobile speed camera in Ashfield Road.

- iv. Cycle thefts in West Chesterton.

Action Point: Sergeant Mišík to clarify reasons for increase in cycle thefts in West Chesterton.

- v. Online hate crime and difficulties in reporting it.

Action Point: Councillor O'Reilly to liaise with Police on a more user-friendly method of reporting online hate crime.

- vi. Seasonal peaks and troughs in burglary figures.
- vii. 20MPH and 30MPH speed limits often broken.
 - a. Sergeant Mišík referred to Association of Chief Police Officers guidance that stated that enforcement should be proportional to speed. The police were focussing on education rather than enforcement of 20MPH at present.

Members of the public raised the following policing issues:

- i. Anti-social behaviour by cyclists:
 - a. Riding at night without lights.
 - b. Riding on the pavement.
- ii. Dangerous driving on Nuffield Road, Fen Road, Green End Road and Chesterton High Street.
 - a. Speeding.
 - b. Drivers losing control of vehicles.
 - c. Cars not allowing space for cyclists on road.
 - Councillor Manning expected a protected cycleway to be implemented on Fen Road through the City Deal.
- iii. Requested more detailed figures/information regarding violent crime in future police reports to NAC as per West/Central Area Committee.
 - a. Sergeant Mišík suggested at the last WCAC that the new format would be rolled out to all area committees.

Action Point: Councillor Todd-Jones to follow up with Police Mr Taylor's request for breakdown of assault figures in police area committee report as they committed to do for West Area.

- iv. Drug dealing in the Bermuda Flats area.

Action Point: Councillor Todd-Jones to follow up with Police and residents' regarding drug dealing in the Bermuda Flats area.

NAC requested additions to the Police priorities. Councillor Todd-Jones formally proposed to add the following:

Added Police Recommendation

- Tackling anti-social behaviour in the Darwin Drive / Akeman Street area.

Add Further Recommendations

- Addressing speeding/dangerous driving on Fen Road.
- Tackling anti-social cycling on pavements.

The change to priorities was **agreed by 10 votes to 0**.

The following priorities were **agreed by 10 votes to 0**:

- Tackling anti-social behaviour in the Darwin Drive / Akeman Street area.
- Addressing speeding/dangerous driving on Fen Road.
- Tackling anti-social cycling on pavements.

16/51/NAC Environmental Reports

The Committee received a report from the Operations Manager – Community Engagement and Enforcement.

The report outlined an overview of City Council Refuse and Environment and Streets and Open Spaces service activity relating to the geographical area served by the North Area Committee. The report identified the reactive and proactive service actions undertaken in the previous quarter, including the requested priority targets, and reported back on the recommended issues and associated actions. It also included key officer contacts for the reporting of waste and refuse and public realm issues.

The following were suggestions for Members on what action could be considered for priority within the North Area for the period of December to February.

Continuing priorities¹

Number	Priority details
1	Enforcement patrols to tackle fly tipping on communal archways and green areas at Minerva Way area (including Augustus Close, Hercules Close, Neptune Close and Apollo Way), Campkin Road,

¹ Amendments to continuing priorities are shown in italics

	Arbury Court, Nicholson Way area (including Albemarle Way, Hanson Court and Walker Court) and Maitland Avenue/ Mortlock Road area.
2	Patrols to address dog fouling on King's Hedges "Pulley" Recreation Ground, Nuns Way Recreation Ground and the areas of Blackberry Way and Lawrence Way including early mornings, evenings and weekends

The Committee discussed the following issues:

- i. Fly tipping in King's Hedges.
- ii. Inappropriate items being left for recycling in Aylestone Road.

Action Point: Wendy Young to liaise with owner of recycling shelf in Aylestone Road regarding appropriate signage to advertise the 'recycling' shelf.

- iii. Dumping of needles.
 - a. Wendy Young said 1 incident of multiple discarded needles had increased the overall collection figure. There had not been a general increase in the number of needles discarded. Details of the incident had been forwarded onto the police to get multi-agency follow up.

Action Point: Wendy Young to provide details of follow up action taken after multiple needles dumped in Kings Hedges.

- iv. Enforcement patrols to tackle fly tipping in Maitland Avenue/Mortlock Road area still to be undertaken.

Action Point: Enforcement patrols to tackle fly tipping to be undertaken in Maitland Avenue/ Mortlock Road area as per P39 of the Officer's report.

- v. Litter on Millennium Bridge because people were ignoring bins provided, possibly due to their location.
 - a. 3 alternative locations suggested: Nicholson Way, the busway near Chesterton College and near the Grove School.

Action Point: Wendy Young to show Cllr Manning copy of Officer advice for bin locations on Millennium Bridge.

- vi. Bins were requested for the following locations:

- a. Histon Road opposite Gilbert Close.
- b. The Tesco end of Primary Court/Scotland Road.

The Committee discussed the following as additional and revised recommendations for action:

Recommendation 1

- i. Deep cleanse of area at Ashfield Road.

Following discussion, Members **unanimously resolved** to approve priorities for action as amended above.

16/52/NAC Environmental Improvement Programme

The Committee received a report from the Senior Engineer, Streets & Open Spaces, regarding the Environmental Improvement Programme (EIP). The report outlined progress of existing schemes and new suggested schemes for 2017/18. The Senior Engineer brought the report up to date by referring to paragraph 5.4 and stating that (should the Area Committee support the new schemes suggested) the estimated £2,000 remaining budget available could rise to some £8,000 by the summer 2017 depending on final out-turn costs of schemes being delivered during 2016-17.

In response to Members' questions the Senior Engineer answered:

- i. (Ref Appendix C P64) North area ward dropped crossing improvements were progressing well and may be completed by January 2017.
- ii. Some funding in addition to the allocated £40,777 may be needed to complete dropped kerb work, but contingency had been made within the EIP budget to cover this.
- iii. Whilst there had been delays in bringing some projects dating from 2013 to fruition there was now no work outstanding from earlier EIP commitments. There had been delays in implementing/completing some projects because:
 - a. The entire Streets & Open Spaces delivery team was replaced during 2014-15 as staff looked for opportunities elsewhere.
 - b. EIP projects often required a lot of officer time/work to implement, with significant dependencies, although the project scope and budget were often quite small.
 - c. Of time required to source suitable contractors to undertake work due to the level of work and demand in the Cambridge area.
- iv. Small operational changes were made to the EIP process in 2015 to improve deliverability for future bidding rounds.

- v. Noted Councillor Manning's request to be listed as a proposer for project 8 North area ward dropped crossings (Ref Appendix C P64 of the Officer's report) along with Councillor Bird.

Following discussion, Members **resolved (unanimously)**:

- i. To approve the allocation of £39,000 of the new EIP funding expected to be available for North Area during 2017-18 towards the list of proposed projects in Appendix A of the Officer's report.
- ii. To defer to 2018-19 the invitation to consider a further application opportunity (should the level of un-allocated funding for 2017-18 be small), but consider allocating any larger amount (anticipated up to £8,000) earlier should it prove practicable.

16/53/NAC North Area Committee Dates for 2017/18

The Committee agreed the following dates for the 2017/18 municipal year:

- 22 June 2017.
- 14 September 2017.
- 14 December 2017.
- 1 March 2018.

16/54/NAC Community Events and Consultation Opportunities

Noted details in the agenda pack.

The meeting ended at 9.10 pm

CHAIR

COMMITTEE ACTION SHEET

Committee	North Area Committee
Date	15th December 2016
Circulated on	December 2016
Updated on	6 January 2017

ACTION	LEAD OFFICER/MEMBER	TIMESCALE	PROGRESS
<p>14/26/NAC - Tree roots opposite Co-op Green End Road causing trip hazard</p> <p style="text-align: center;">Page 27</p>	<p>Councillor Manning</p>		<p>Update: Additional tree has been added to the list for remedial work but the item is still on-going. Further update: given the cost and the fact that there is now an EIP in that area, and a project I have got added to the Northern Area Corridor Transport Plan pot, it will be done as part of one of these. Officers have confirmed this won't affect either project (in terms of adding extra cost or stopping elements from being done).</p> <p>Update 5 Dec 14 Cllr Manning : Initial site visit completed and this matter will be included in a wider feasibility study of the area.</p> <p>Update 15 Dec 2014 Cllr Manning: Work has been delayed but the issue is still ongoing.</p> <p>Update 20 Jan 2015 Cllr Manning: Feasibility study still being written.</p> <p>Update 9th April Cllr Manning A residents meeting had been held and a decision on future action is expected to be considered post-election.</p>

Update 14th August Cllr Manning

Waiting for designs to be completed by SKANSA.

Update 20th January Cllr Manning

This matter is being address with other issues in the area.
The action to be retained for further update

Update 31 March Cllr Manning

This matter was progressing along with the rest of the City Deal consultations.

Update 9 June Cllr Manning

City Deal meeting earlier today discussed this issue

Update 15 December 2016 Cllr Manning

City Deal scheme may go forward in January 2017. Maybe resolved by March? Retain on action sheet for the present.

14/65/NAC

Parking restriction in De Freville area and impact around Milton Rd Library

Cllr Scutt

18 December 2014, Cllr Scutt

Regarding Parking Restrictions steps have been taken to place double yellow on the corners of all the inter sections Milton Road.

County Council are appointing an Officer to look at parking in Cambridge and the problems that residents experience to determine safe parking.

Would investigate the possibility of four hour parking restrictions in this area as requested by Mr Sergeant at the December meeting.

3 Feb 2015 Update Cllr Scutt

From County Officers:

With regards to Milton Road Library parking, whilst it would not be permissible to restrict a parking space solely for library use, the County can restrict the duration of stay to say one hour to prevent long term parking and introduce some turn-over of vehicles utilising the parking bay.

This would involve an amendment to the traffic regulation order (TRO) and the installation of additional signage, so there would be a cost associated with this work which would need to be borne by a third party - that is residents or need to secure funding from alternative sources.

Update 9th April Councillor Scutt

Has discussed this with County Council Officers and options under are consideration including Pay and Display bays,

Update 10th September Councillor Scutt

County transport officers advised that it would not be possible to have dedicated parking bays for the library. Restricting parking to two hours in the area would require a Traffic Regulation Order and would include a wider area.

Update 19th November Councillor Scutt

Double yellow line work due to for early next year.

Update 31st March Councillor Scutt

Cllr Scutt stated that this issue was still on going, the Cambridge Joint Area committee was working on the issue of parking generally and she wanted a solution for the whole of Cambridge.

			<p>Double yellow lines are in the queue, two new officers have been appointed and expect work will be done in due course.</p> <p>Update 15 December 2016 Cllr Scutt Joint Area Committee is currently looking at parking in residential areas and will review in its January 2017 meeting. Maybe considered by Highways meeting in March? Retain on action sheet for the present.</p>
<p>15/4/NAC Q2 To investigate with property services: area around Tesco's continues to be untidy. There is a large, uncovered, wire cage style litter bin, and rubbish gets blown about.</p>	<p>Councillor Price</p>		<p>Property Services are in the process of renewing the lease to Tesco and as part of this they will be leased an additional area at the rear of the shops where their cages are and will be erecting a simple store with flat roof (subject to landlord's approval of the design and planning approval). Their cages will be installed in the area and this should be tidier and eliminate blown rubbish. The rear access road is just for Tesco and the takeaway for deliveries but not, longer term parking. The tenants are responsible to ensure the access is not blocked and control rubbish etc. We will pick up these issues with them.</p> <p>16 June 2015</p> <p>Retrospective planning application on-going.</p> <p>Update 10th September Councillor Price Councillor Price stated that work to improve was underway. He would push to have the double yellow lines in the area reinstated.</p> <p>Update 31 March Councillor Price The area had been re-surfaced recently and was waiting to hear when lines would be re-instated. There had been no</p>

			<p>complaints about rubbish and wanted to retain until the lines had been re-instated.</p> <p>Update 15 December 2016 Cllr Price Retain on action sheet until the lines had been re-instated.</p>
<p>15/17/NAC Sharing 'Open Data' to assist with the setting of Area Committee Police Priorities</p>	<p>Councillor Manning and Councillor Todd-Jones</p>		<p>Councillor Manning has agreed to take this forward and will be arranging a follow up meeting.</p> <p>Update Sept This will be discussed at the next meeting when the Police are present.</p> <p>Update 15 December 2016 Cllr Manning No action to date. Retain on action sheet for the present.</p>
<p>16/04/NAC Q5 Chesterton Recreation Ground toilets often locked: why?</p>	<p>Councillor Manning undertook to raise with Councillor Johnson</p>		<p>Update 15 December 2016 Cllr Manning Gent's toilets are generally open, but the ladies are not. Cllr Manning to investigate on behalf of Mr Bond / Chesterton Eagles Football Club. Retain on action sheet for the present.</p>
<p>16/19/NAC Meadows Community Centre</p>	<p>Jackie Hanson to have dialogue with Histon and Impington Parish Council with regards to Meadows Community Centre.</p>		<p>Update 9 June Cllr Todd-Jones undertook to investigate further.</p> <p>Update 15 December 2016 Cllr Todd-Jones Undertook to investigate further as no information available to date. Retain on action sheet for the present.</p>
<p>16/21/NAC Q1 Adshel Bus Shelter</p>	<p>Cllr Todd-Jones and John Richards to request that Adshel provide a replacement Bus Shelter.</p>		<p>Adshel/Clearchannel hoping to replace bus shelter with a refurbished shelter.</p> <p>Update 15 December 2016 Cllr Bird Bus shelter now in place. Remove from action sheet.</p>
<p>16/30/NAC Q1</p>	<p>Councillor Onasanya</p>		<p>Investigate street lights in Callander Close.</p>

Post meeting update:
The County Strategic Projects Officer has advised their street lighting faults database has been checked and they have not had any faults reported for this road since February 2015. Balfour Beatty have also advised they do not have any outstanding customer issues at present.

Update 30th Aug 2016

Liaising with Paul Payne at Balfour Beatty to see what (if anything) can be done to eradicate the dark areas highlighted in the plan sent by the constituent.

Update 20 September 2016

Unfortunately we are unable to change the type of lantern which has been installed due to the specification requested by Cambridge county council. We understand that there will be areas with darker spots where lights have been removed due to the 10% reduction on residential roads.

As there is no liable obligation for the council to provide any Streetlighting on residential roads this is unfortunately where the lights are being removed from. We will therefore not be making any changes to the lighting on Callander Close.

Update 15 December 2016

Cllr Onasanya to feedback at next NAC meeting. Retain on action sheet for the present.

Final Update 25th January 2017 Reported for information – will be removed from the list post March meeting

On 24 October 2016 Balfour Beatty's engineer Wayne

			Shardelow visited Callander Close at night and reported that the two lighting columns L4 RKK and L5RKK which are located at the end of Callander Close and the lighting levels recorded were in line with the expected results. The distance between the columns was 40m and kerb edges, dropped kerbs and pavements could be identified across the whole length of the road.
16/43/NAC Q1	Ward Cllrs (City and County) to action together		Milton Road pavement and road surface in need of repair. Update 15 December 2016 Cllr Scutt City and County Councillors are working together with Milton Road Local Liaison Forum to address issues. There is funding available from the City Deal to make improvements. Retain on action sheet for the present.
16/43/NAC Q5 Page 33	Cllr Scutt and Cllr Onasanya		Pavements to Arbury Road in poor state of repair. Raise as priority. Contact cycle team about this matter Update 15 December 2016 Cllr Scutt County Officers looked at Arbury Road pavement; it is not in a state where the County Council can justify making repairs due to budget restrictions. Cllr Scutt to look at alternative funding sources to undertake work. Retain on action sheet for the present.
<u>Open Forum</u> Councillor Todd-Jones to liaise with Ambulance Service to ensure Emergency Services have a comprehensive	Cllr Todd-Jones		Committee Manager note: Cllr Gillespie is following this up for West Area

<p>list of defibrators stored in community buildings across the city.</p>			
<p><u>Open Forum</u></p> <p>Ward Councillors to liaise with Mr Bond regarding replacement of damaged middle bollard on St Andrew's Rec cycle path</p>			
<p><u>Open Forum</u></p> <p>Cllr Todd-Jones to pass on concerns from Mr Davidson (regarding damage to his garden by City Council Officers) to the Chief Executive and Senior Officers.</p>	<p>Cllr Todd-Jones</p>		
<p><u>Open Forum</u></p> <p>Cllr Scutt to check lighting levels in the Hawks/Campkin Road area in response to residents' concerns (raised by Mrs Harris)</p>	<p>Cllr Scutt</p>		
<p><u>Open Forum</u></p> <p>Cllr Todd-Jones to follow up with John Parrott about lack of light</p>	<p>Cllr Todd-Jones</p>		

<p>concerns in the Borrowdale bus shelter (raised by Ms Rundblad).</p>			
<p><u>Open Forum</u></p> <p>Cllr Todd-Jones to follow up with Planning Officers if City Deal should be consulted in planning applications (raised by Mr Taylor).</p>	<p>Cllr Todd-Jones</p>		
<p><u>Open Forum</u></p> <p>Cllr Todd-Jones to follow up with Andrew Preston regarding Fen Road work progress query raised by Mr Taylor.</p> <p>Cllr Manning to attend Local Highways Improvement Panel in January 2017 and will pass on Mr Taylor's comments eg lack of publically available information.</p>	<p>Cllr Todd-Jones</p> <p>Cllr Manning</p>		
<p><u>Police and Safer Neighbourhoods</u></p> <p>Sgt Misik to clarify reasons for increase in</p>	<p>Lynda Kilkelly</p>		<p>Update 22/12/16: Sgt Misik has emailed Cllr Sargeant: Had a look through the crime figure for the last 6 months to look for a pattern in the cycle thefts. There are two main areas which have had above average levels of theft of bike and these were Manhattan drive and the various Uni Boat houses.</p>

<p>cycle thefts in West Chesterton.</p>			<p>These two locations account for around 15% of the theft of cycles for the ward.</p> <p>Neither of these two locations are that surprising as there is increased number of cycles in the area.</p>
<p><u>Police and Safer Neighbourhoods</u></p> <p>Anti-social behavior team to follow up with Police regarding installation of mobile speed camera in Ashfield Road.</p>	<p>Lynda Kilkelly</p> <p>Louise Walbank</p>		
<p><u>Police and Safer Neighbourhoods</u></p> <p>Cllr Todd-Jones to follow up with Police Mr Taylor's request for breakdown of assault figures in police area committee report as they committed to do for West Area.</p>	<p>Cllr Todd-Jones</p> <p>Lynda Kilkelly</p>		<p>Sgt Misik suggested at WCAC that the new format would be rolled out to all area committees.</p> <p>Update 22/12/16: Sgt Misik has spoken with the Chief Inspector around the breakdown of the assault data that was discussed at the area committee and as I expected he said the it is intention to review the data provided to all the committees and he hopes to be able to split the assault data into assaults with injury and those without.</p>
<p><u>Police and Safer Neighbourhoods</u></p> <p>Cllr O'Reilly to liaise with Police on a more user-friendly method of reporting online hate crime.</p>	<p>Cllr O'Reilly</p> <p>Lynda Kilkelly</p>		
<p><u>Police and Safer</u></p>			

<p><u>Neighbourhoods</u></p> <p>Cllr Todd-Jones to follow up with Police and residents' regarding drug dealing in the Bermuda Flats area.</p>	<p>Cllr Todd-Jones Lynda Kilkelly</p>		
<p><u>Environmental Report</u></p> <p>Wendy Young to liaise with owner of recycling shelf in Aylestone Road regarding appropriate signage to advertise the 'recycling' shelf.</p>	<p>Wendy Young</p>		
<p><u>Environmental Report</u></p> <p>Wendy Young to provide details of follow up action taken after multiple needles dumped in Kings Hedges.</p>	<p>Wendy Young</p>		
<p><u>Environmental Report</u></p> <p>Enforcement patrols to tackle fly tipping to be undertaken in Maitland Avenue/ Mortlock Road area as per P39 of the Officer's report.</p>	<p>Wendy Young</p>		
<p><u>Environmental Report</u></p>			<p>Sent to Cllr Manning 22 Dec 2016</p>

Wendy Young to show Cllr Manning copy of Officer advice for bin locations on Millennium bridge.	Wendy Young		
---	-------------	--	--

Police Priorities

Original Recommendation

- Anti-social behaviour in the Darwin Drive / Akeman Street area.

Revised Recommendations

- Anti-social behaviour in the Darwin Drive / Akeman Street area.
- Speeding/dangerous driving on Fen Road
- Tackling anti-social cycling on pavements

Environment Reports

Continuing priorities:

1 Enforcement patrols to tackle fly tipping on communal archways and green areas at Minerva Way area (including Augustus Close, Hercules Close, Neptune Close and Apollo Way), Campkin Road, Arbury Court, Nicholson Way area (including Albemarle Way, Hanson Court and Walker Court) and Maitland Avenue/ Mortlock Road area.

2 Patrols to address dog fouling on Kings Hedges “Pulley” Recreation Ground, Nuns Way Recreation Ground and the areas of Blackberry Way and Lawrence Way including early mornings, evenings and weekends

Agreed Officers recommendations (above) plus trialling of bins in Ashfield Close.

EIP

North Area Committee is agreed:

- 2.1 To consider the allocation of £39,000 of the new EIP funding expected to be available for North Area during 2017-18 towards the list of proposed projects in Appendix A of this report.
- 2.2 To ~~consider whether to extend a further application opportunity in 2017-18 with the modest amount of funding expected to be available, or~~ defer this invitation to 2018-19 and allocate additional £8,000 in late 2017.

This page is intentionally left blank

CAMBRIDGE CITY COUNCIL

REPORT OF: Urban Growth Project Manager

TO: North Area Committee

2/3/2017

WARDS: Arbury, East Chesterton, King's Hedges, West Chesterton

S106 DEVOLVED DECISION-MAKING: 2016/17 PRIORITY-SETTING

1. INTRODUCTION

In late 2016, the council invited ideas to improve open spaces and play areas in Cambridge as part of the latest S106 funding round. Six proposals were suggested in North Area (see Appendices A-F). Section 3 sets the context and Section 4 assesses the applications against the council's S106 selection criteria (see Appendix G).

2. RECOMMENDATIONS

It is recommended that the North Area Committee prioritises the following local project proposals for the use of devolved S106 contributions from North Area, subject to business case approvals:

- a. more play equipment and landscaping improvements at Alexandra Gardens (£35,000 cost estimate from 'play provision for children and teenagers' funds [£15k] and 'informal open space [£20k]);
- b. improving biodiversity and access at Bramblefields local nature reserve (£12,000 cost estimate from 'informal open space' funds);
- c. new skate and children's scooter park at Chesterton Recreation Ground (£50,000 cost estimate from 'informal open space' funds);
- d. mini climbing dome at Nun's Way Rec Ground (£20,000 cost estimate from 'play provision for children and teenagers' funds).

3. BACKGROUND

- 3.1 New homes and development lead to more demands on local facilities. The council can ask developers to pay off-site S106 contributions to mitigate that impact when not addressed on-site. An overview of the council's approach to S106 contributions can be found at <https://www.cambridge.gov.uk/our-approach-to-s106>.

- 3.2 Decision-making over the use of some off-site, generic¹ S106 contributions from local developments has been devolved to area committees since 2012. The North Area Committee has received S106 priority-setting reports every year since then. During 2016, the S106-funded projects completed in the North Area included:
- Bateson Road Green landscaping & play area improvements; and
 - Rowan Centre community meeting space (both West Chesterton);
 - Cambridge Gymnastics Academy new gym and trampoline pit (King's Hedges ward) – prioritised by the Executive Councillor;
 - Dundee Close, Discovery Way & Scotland Road play equipment installation (East Chesterton ward);
 - St Luke's Church refurbished community facilities (Arbury ward).
- 3.3 **S106 funding availability:** Reports over the last few years have alerted the Area Committee to the implications of new national restrictions² and regulation changes. As a result, locally, the receipt of new generic S106 contributions is tapering off and, overall, generic S106 funds are running down. Although consolidating remaining generic contributions into either 'all devolved' or 'all centralised' funds (see paragraph 3.5) helps to maximise spending power, availability is still limited. Table 1 provides an estimate of funding availability as at mid-February 2017: these figures are currently being reviewed³ ahead of the S106 report to the Community Services Scrutiny Committee on 16 March 2017 (likely to include a city-wide update).
- 3.4 Whilst S106 contributions have been devolved on an area basis, the need to provide a ward-level analysis becomes more important in this context. This does not mean that S106 contributions from a particular ward can only be used to fund projects in the same ward (as parts of other wards may come within the catchment area for an improved facility too). Officers aim to fund projects from relevant S106 contributions from nearby developments in the same ward before allocating contributions from nearby developments in neighbouring wards in the same Area.

-
1. Generic contributions relate to broad infrastructure types (eg, 'informal open space') and were the sort that the council tended to secure prior to the changes to government regulations in April 2015. Since then, however, the council can now only seek specific contributions relating to improvements to particular facilities.
 2. S106 funds can no longer be sought from developments of fewer than 11 homes.
 3. These estimates consolidate all available 'open space' and 'play provision' contributions from the Area into separate devolved funds. The review is taking account of new S106 income received recently and reallocations of S106 funding in order to optimise links between the location of projects and where the contributions come from. The ward-level funding availability analysis may change as a result.

Table 1: Availability of S106 funding devolved to North Area⁴

Ward	'Play provision'	'Informal open space'
Arbury	Around £15,000	£15,000 - £30,000
East Chesterton	Less than £1,000	£50,000 - £75,000
King's Hedges	£15,000 - £30,000	Less than £15,000
West Chesterton	Less than £15,000	£50,000 - £75,000

- 3.5 **2016/17 funding round:** The overall arrangements for the latest round were agreed following a report to the Community Services Scrutiny Committee in October 2016. As part of this:
- all remaining generic S106 contributions for providing/improving 'informal open space' and play 'provision for children and teenagers', which have been received from developments in a local area⁵ are now devolved to the local area committee;
 - at the same time, the use of all remaining contributions in the 'outdoor' and 'indoor sports', 'public art' and 'public realm' types are decided by the relevant executive councillor⁶;
 - proposals for the use of the 'community facility' and 'public realm'⁷ contribution types have not been sought in the 2016/17 round, in order to allow the council take stock of the findings of the on-going strategic review of community provision and the budget implications of a number of on-going public realm improvements.
- 3.6 The 2016/17 S106 funding round has proceeded as planned.
- Local residents and community groups were invited⁸ to put forward proposals, over seven weeks from late October until 19 December 2016⁹, for improving local open spaces and play areas.

-
- Variations in funding across the Area reflect different levels of development between wards and the allocation of local funds to local projects.
 - Based on area committee boundaries (North, East, South and West/Central).
 - Even so, the council continues to seek to fund projects in a particular ward or area from S106 contributions received from developments in the same ward or area.
 - Deferring the next funding round for 'public realm' contributions is not an issue for North Area, which has no generic S106 contributions available in this category.
 - Awareness was raised amongst residents/residents' associations, community groups, equalities/diversity groups and councillors via emails, social media, the council's website, news releases and the 'Cambridge Matters' magazine.
 - Following the 19/12/16 deadline, councillors were given until mid-January 2017 to put forward any other proposals. Council services were also suggest possible schemes which could mitigate the impact of development and address needs identified in recent strategies, such as the Outdoor Play Investment Strategy.

- b. All proposals received have been assessed by officers against the council's 2016/17 S106 selection criteria (see Appendix G).
- c. S106 grant applications for small-scale public art projects in Cambridge (including some from North Area¹⁰) are being reported to the Community Services Scrutiny Committee on 16 March.

4. CONSIDERATIONS: ASSESSMENT OF THE S106 PROPOSALS

- 4.1 Six project proposals have been received in the 2016/17 round¹¹ (see Appendices A – F) and have been assessed against the criteria.

A. ALEXANDRA GARDENS PLAY AREA/OPEN SPACE			
Ward:	Arbury	Estimate:	£30,000 - £35,000
Assessment: YES to modified proposal. Fencing maintenance would not be eligible for S106 funds (but could be carried out via repairs and renewals budgets. A modified proposal could be suitable for S106 funding: installing one or two pieces of new play equipment within the play area (in the region of £15,000) plus landscaping improvements (possibly including shrub planting) and some new park benches and bins (possibly in the region of £15,000-£20,000).			

B. ALEX WOOD ROAD BENCHES AND BINS			
Ward:	Arbury	Estimate:	Not eligible
Assessment: NOT ELIGIBLE. The proposed public realm improvements on Alex Wood Road would not be eligible for S106 funding being considered in the 2016/17 S106 funding round. It may be more suited to Environmental Improvement Programme (EIP) funding – the relevant manager has been made aware.			

10. These include public art grant applications for: 'Colours in the Community' (mentions Arbury Festival, North Cambridge Academy and Chesterton Community College); 'Mitcham's Moving Lighting project'; 'History Walking Trails 2' (involving Arbury, Chesterton, King's Hedges and Shirley primary schools); 'River Cycle at Rowan'; and 'Trees of Change' (engaging with care homes and schools in East Chesterton and West Chesterton). Note: not all these proposals meet the S106 selection criteria for public art and the Executive Councillor for Streets and Open Spaces will be asked to choose which eligible proposals to prioritise.
11. Queries were also raised about reinstating College Fields play area [West Chesterton] (but there is now a Type B play area a little further along Woodhead Drive) and improving the Type A local play areas at Neptune Close or Lawrence Way [King's Hedges] (but, in the context of the Outdoor Play Investment Strategy, improving the nearby, larger Type C neighbourhood play area at Nun's Way is suggested instead).

C. BRAMBLEFIELDS LOCAL NATURE RESERVE (LNR)			
Ward:	East Chesterton	Estimate:	£10,000-£12,000
<p>Assessment: YES to modified proposal. Bramblefields is an important small area of habitat. Any improvement proposals need to be carefully balanced with the biodiversity value of the space. In this context, officers would not support proposals for more lighting.</p> <p>The council has already entered into an agreement for the local primary school to use a fenced-off area for environmental education. Wider use of this space could be explored as part of the project, as long as this was sensitive to the ecological implications.</p> <p>Tidying up and safety works would not qualify for S106 funding, but could be undertaken separately (possibly including volunteer days).</p> <p>A modified proposal could be carried out in addition to mitigation works relating to Chesterton Station¹². This might involve biodiversity improvements (habitat creation), landscaping (eg, shrub planting), new benches/bins and further signage & information boards.</p> <p>Previous devolved S106 funding of local play area improvements means there are hardly any S106 contributions left from the ward for 'play provision for children and teenagers'. This is likely to rule out the proposed play area improvements at Bramblefields. Beyond that, officers question the extent to which the existing 'natural' play provision is used – indeed, this provision may need to be reviewed.</p>			

D. CHESTERTON REC GROUND SKATE/SCOOTER PARK			
Ward:	East Chesterton	Estimate:	£50,000
<p>Assessment: YES. The improved skate park facilities – replacing the outdated 'half-pipe' facility and introducing a new children's scooter park - is supported. Sports officers advise that its location (on the other side of the play area) would not affect any sports development around the sports pavilion. The removal of the 'half pipe' could improve the view across the park from the pavilion.</p> <p>The significant local availability of S106 'informal open space' contributions nearby in East and West Chesterton¹³ means that this proposal could be funded alongside the improvements to Bramblefields LNR. This could still leave open the option of future funding towards improvements to the Halingway tow path (if an eligible and robust proposal can be developed in due course).</p>			

-
12. Network Rail will be digging a new pond in February-March 2017 and is also due to assist with new interpretation panels and review of the existing management plan
13. Subject to confirmation following the current review of existing S106 allocations.

E. HALINGWAY TOWPATH IMPROVEMENTS

Ward: East Chesterton

Estimate:

Assessment: NOT READY TO BE CONSIDERED YET. The county council is widening and hard surfacing the section of towpath between the ramp up to the proposed new bridge and the path linking to Fen Road. This ties in with plans for the Chisholm Trail. The path is owned by the Cam Conservators, with the maintenance of public rights of way being the responsibility of the county council.

The widening of further stretches of the tow path is a possibility, but this proposal needs to be developed in more detail before it is ready to be considered. There are questions about how the use of S106 funding sits alongside county council responsibilities and whether other funding could be secured from city/county council budgets for walking/cycling and, possibly, from the Environmental Improvement Programme and/or other funding opportunities. Until these issues and options have been clarified, through discussions with the county council and Cam Conservators, it would be premature to allocate S106 funding to this proposal yet.

F. NUN'S WAY REC GROUND ADDITIONAL PLAY EQUIPMENT

Ward: King's Hedges

Estimate: £20,000

Assessment: YES. Some S106 funding is available to improve the play value of one of the ward's large neighbourhood play areas, which attracts children from across King's Hedges. Nun's Way Rec Ground has not received S106 funding for play area improvements in the past, albeit that it has benefitted from a new skate park in recent years. In contrast, 'The Pulley' play area has received funding for both the play area improvement and the splash pad.

- 4.2 The proposals prioritised by the Area Committee will be allocated appropriate S106 contributions and added to the council's 'projects under development' list. Public consultation would be carried out on project proposals and designs, as appropriate. Business cases¹⁴ and community use agreements will be developed. Under current arrangements, project appraisals for local projects under £75,000 are expedited, with the business case being sent to the Area Chair, Vice Chair and Opposition Spokes for comment, prior to sign-off by the relevant service manager under delegated authority¹⁵.

14. The business case sets out the project's scope, design, costs, delivery timescales & other implications. It takes account of consultation findings too (as appropriate).

15. Appraisals for local projects above £75,000 are reported back to the Area Committee, albeit that this would not to apply to the proposals presented here.

5. IMPLICATIONS

- 5.1 **Financial implications:** Whilst it has been possible for this report to recommend a number of substantial projects for S106 funding from the Area Committee's devolved funding, it is clear that there is significantly less room for manoeuvre than in the past. Once this off-site generic funding has been used, there will be little or no more.
- 5.2 Last October's Community Services Scrutiny report on the S106 priority-setting process highlighted that, although it will not be possible to come to a definitive view until after the 2016/17 round, this might be the last full priority-setting round covering such a range of the generic contribution types and all areas of the city. In future, there might have to be narrower priority-setting exercises based on certain contribution types or areas. Consideration may also need to be given to using residual generic contributions to supplement the funding of projects for which specific projects are being collected¹⁶.
- 5.3 **Staffing implications:** Those projects that are prioritised will be developed and taken forward by council officers in the Streets and Open Spaces Development team, in the coming year as/when on-going projects are completed. Business cases for projects over £15,000 will be prepared for the council's (officer-level) Capital Programme Board, prior to seeking the comments of the Area Chair, Vice Chair and Opposition Spokes.
- 5.4 **Other implications:** Business cases for individual projects will consider a range of factors including equalities and poverty implications, climate change ratings, community safety, procurement matters and communications and consultation. An overview of the progress being made on the delivery of S106-funded projects is updated every three to four months on the council's S106 projects web page (www.cambridge.gov.uk/s106-projects).

6. BACKGROUND PAPERS

- 6.1 These background papers on the S106 devolved decision-making process were used in the preparation of this report:
- 'S106 priority-setting process' (Streets and Open Spaces) report to Community Services Scrutiny Committee on 6/10/2016;
 - 'Outdoor Play Investment Strategy, 2016-20' report to Community Services Scrutiny Committee on 8/10/2015;

16. More details about the council's interim approach to seeking specific S106 contributions can be found at www.cambridge.gov.uk/changes-to-s106-funding.

- 'S106 devolved decision-making: 2015/16 priority-setting' report to North Area Committee on 19/11/2015.

6.2 Further information (can be found on the Developer Contributions web page (www.cambridge.gov.uk/s106)). This includes sections on the council's approach to S106 funding, S106-funded projects, the S106 priority-setting process and changes to S106 funding.

7. APPENDICES

S106 proposals for improvements at

- A. Alexandra Gardens
- B. Alex Wood Road benches and bins
- C. Bramblefields local nature reserve
- D. Chesterton Recreation Ground skate/scooter park
- E. Halingway tow path improvements
- F. Nun's Way Recreation Ground additional play equipment

- G. 2016-17 S106 selection criteria (Cambridge City Council)

9. INSPECTION OF PAPERS

To inspect the background papers or if you have a query on the report please contact:

Author's Name: Tim Wetherfield
Author's Phone Number: 01223 – 457313
Author's Email: tim.wetherfield@cambridge.gov.uk

Proposal from a local councillor for

Alexandra Gardens play area / open space

Suggested by Councillor Mike Todd-Jones

1. What sort of improvements do you have in mind?
--

Renew / enhance fencing and benches surrounding the play area

2. Why is this project needed? (ie, what is the current unmet need?)

Facilitate and increase use of the play area
--

3. How would local communities within Cambridge benefit?

Improve safety / benefit from making use more attractive
--

4. Have any preparations/discussions taken place about this?

Brief discussions with Urban Growth Project Manager

5. Any opposition / potential issues? How might this be overcome?
--

Not applicable

Proposal from a local resident for

Alex Wood Road benches and bins

Email from a local resident

Sent: 16 December 2016 22:27

Subject: Alexwood Road

Keen to improve Alex Wood Road, Arbury. Many local people use this road and there are x2 benches heavily used which are on their last legs.

Also some a bin or two would help with litter and possibly a few dog bins.

Proposal from a local resident for

Bramblefields local nature reserve**1. What sort of improvements do you have in mind?**

Tidying up and making safe the Bramblefields area. This may be simple gardening or involve some landscaping. Improving the basic play equipment and perhaps allocating an area which is kept safe for children, with some seating (up to 30 seats for a full class?), making it easily usable in particular for outdoor learning, for which no other space is available or as suitable in East Chesterton.

2. Why is this project needed? (ie, what is the current unmet need?)

No safe areas for forest school sessions for locally-schooled children currently with Chesterton Primary and Chestnut nursery and Shirley school (among many others I suspect) apprehensive about running sessions in Bramblefields with unsavoury and unsafe objects found in what is quite a seedy and poorly-lit part of East Chesterton. Local development including the new station will bring more children and families into the area and making an existing public space more usable is key. All the increased footfall as a result of development including the station and what follows it would benefit from 'Bramblefields for All'.

3. How would local communities within Cambridge benefit?

Children locally, especially those at local schools and pre-schools/nurseries would be able to enjoy and make use of what should be an excellent resource. It would also mean all should feel safer about walking/cycling around Bramblefields at any time of day. A more sanitized, better lit area would also make it less easy for drug dealing and drug-taking to occur which would also be a benefit to the local community as a whole. The beauty of public open spaces like this are that they can be a benefit to all because they are accessible to all when they work well and are safe. Also as these spaces are free, people on lower incomes have another space they can utilise locally where deprivation levels are not insignificant.

4. Have any preparations/discussions taken place about this?

Discussed at Parent's forum at Chesterton Primary on 12/12/16 where it attracted much support after I saw the notice in 'Cambridge Matters'.

5. Any opposition / potential issues? How might this be overcome?

I am not aware of any opposition, only support.

Proposal from council officers for

Chesterton Recreation Ground skate/scooter park

1. What sort of improvements do you have in mind?

To replace / integrate the current concrete mini ramp into a better offer and include scooter provision.

2. Why is this project needed? (ie, what is the current unmet need?)

The current facility is used, but outdated and does not cater for wide range of users. The proposal would stay local to existing footprint and would be considered in the context of the surrounding area. This park has the space to accommodate this improvement.

3. How would local communities within Cambridge benefit?

Improvements would increase the age range of participation with this facility. Similar facility installed at Cherry Hinton Rec which was really well received and has proven to be really popular.

4. Have any preparations/discussions taken place about this?

Not as yet

5. Are you aware of any opposition to this proposal or other potential issues? If so, how might this be overcome?

Facility currently exists so hope these improvements would be supported.

Proposal from a local councillor for

Halingway towpath improvements

Suggested by County Councillor Ian Manning

Improving the Halingway towpath as an access route to the new Cambridge North train station and Chisholm Trail bridge

Where: East Chesterton Halingway between riverside and Fen Road access point/bridge landing location.

1. What sort of improvements do you have in mind?

Widening of path to cope with additional user volume.
 Improve drainage – currently there is a lot of pooling water after rain.
 Potentially cycle/pedestrian segregation, continuing from path from water street via river side.

2. Why is this project needed? (ie, what is the current unmet need?)

Both the Cambridge North station and the Chisholm Bridge will result in a much higher volume of cycle and pedestrian traffic along this route, which is preferable to both modes of transport than going along Fen Road.

3. How would local communities within Cambridge benefit?

Will allow more pedestrians/cyclists to avoid having to use Fen Road. This is particularly important for infirm/vulnerable pedestrians as it separates them from motor traffic and, if cycle/pedestrian segregation is implemented, protects them from high speed cyclists on the same route.

4. Have any preparations/discussions taken place about this?

The River Cam Conservators will need to be formally approached – although it has been discussed informally with them and numerous local representatives over the years.

5. Any opposition / potential issues? How might this be overcome?

-

Proposal from council officers for

Nun's Way Rec Ground additional play equipment

1. What sort of improvements do you have in mind?

Installing a Cirrus mini-climbing dome for children of junior school age at Nun's Way Recreation Ground

2. Why is this project needed? (ie, what is the current unmet need?)

Local councillors have called for the additional play area equipment in King's Hedges, making use of the S106 funding from the ward that is available for 'play provision for children and teenagers'. In the context of the Outdoor Play Investment Strategy, it would make sense to locate this at one of the larger (Type C) Neighbourhood play areas within King's Hedges.

3. How would local communities within Cambridge benefit?

This would help to provide an extra element of play equipment for children aged 7+ to enjoy.

4. Have any preparations/discussions taken place about this?

No.

5. Any opposition / potential issues? How might this be overcome?

Local consultation would be carried out if the proposal is prioritised by the Area Committee.

2016-17 S106 selection criteria

This is a shortened version of the criteria, tailored to the bidding process for proposals for play area and open space improvements and applications for small-scale public art grants.

Project proposals need to...

1. be **ELIGIBLE** for S106 funding

- a. Proposals need to be about providing, improving or giving better access to a facility within the city of Cambridge, in order to help mitigate the impact of local development.
- b. 'Informal open space' S106 funding can be used to fund improvements to the city's parks & open spaces, such as paths/surfacing, landscaping (including BMX tracks and skate parks), drainage, fences/gates, habitat creation, trees, shrubs and trim trails.
- c. 'Provision for children and teenagers' S106 funding can be used to fund improvements to the city's play areas, such as play equipment and safety surfacing under that equipment.
- d. To be eligible for S106 public art funding, the project needs to focus on original, high quality public art that is:
 - designed, produced or facilitated by an artist or craftsperson;
 - engages local communities;
 - is publicly accessible; and
 - has a legacy (there would need to be a permanent record of temporary artwork).

Small-scale, public art grants are for projects (normally, seeking up to £15,000 of public art S106 funding). Applications are expected from local organisations or community groups (not directly from an artist). Public art within schools (which is visible to school users, parents and visitors) comes within the scope of public art S106 funding.

2. be **AFFORDABLE** within the S106 funding available for the relevant contribution type in that part of the city to which it relates

- a. S106 funding availability is running down and spread unevenly between wards given variations in levels of development and the distribution of previous S106-funded projects.

- b. We would **particularly encourage proposals** for the following contribution types **from**:
- Informal open space: Trumpington, Castle, Coleridge, East and West Chesterton;
 - Provision for children and teens: Trumpington, Coleridge and Queen Edith's ward;
 - Public art: Trumpington, Coleridge, Romsey and Queen Edith's.
- c. Unfortunately, S106 funding availability is currently low for the following wards and so, realistically, it is not likely to be worthwhile making an application in 2016/17:
- Informal open space: Arbury, King's Hedges, Petersfield and Romsey;
 - Play areas: Arbury, East and West Chesterton, Abbey, Castle, Market and Newnham;
 - Public art: Cherry Hinton.
- d. For those wards not mentioned in these lists, it may be possible to put forward small-scale proposals, but please be aware that funding availability may be limited.
- e. Please note: councillors may not wish to invest all the available contributions available (for a particular contribution type) from a particular ward in a single project.
- f. Public art grant applicants must give assurances that they need the S106 funding that they are seeking (i.e., that they do not already have sufficient funding for the project).
- g. Local groups seeking S106 public grants should carry out other fund-raising too.

3. be an **EFFECTIVE USE OF RESOURCES**

Priority will be given to proposals where it is clear that the project would be consistent with council strategies, facility audits and related reports.

Tips: Focus proposals for play area improvements on larger play areas. Check which play areas & open spaces have already had S106 funding (see the recent/on-going project list).

4. provide **ADDITIONAL BENEFIT**

S106 funding cannot be used for replacing like-for-like facilities/equipment or repairing and maintaining existing facilities.

5. be **ACCESSIBLE**, in line with the council's grants and equalities policies

- a. Play area and open spaces need to be publicly owned and accessible to all.
- b. Successful public art grant applicants must sign a grant agreement (which is monitored), including an undertaking that the project will not discriminate against any community group (eg, in relation to race, gender, religion, disability, sexual orientation and/or, age).

6. be **REALISTIC, ACHIEVABLE AND READY TO BE CONSIDERED**

- a. Proposals need to be clear about what is proposed, where it would be and how it would be implemented.
- b. Applicants seeking a S106 grant for a project they would take forward would need to give details of preparations being made to secure planning permission (if necessary) and steps taken to engage the local community about the proposed project.
- c. Grant applicants would also need to provide evidence of their fund-raising efforts and expected timescales for completing fund-raising.
- d. Priority will be given to project proposals which could reasonably be expected to reach the final stages of project delivery within 18 months of the priority-setting decision.

7. Be **FINANCIALLY VIABLE, WITH ROBUST MANAGEMENT PLANS**

- a. The council would need to be satisfied that sufficient resources are in place to ensure that the effective management and running of the new facility in future.
- b. Grants applicants seeking S106 funding would need to demonstrate that they could continue to resource the project in future. Grant agreements feature clauses for returning to the council grants received (in whole or in part) should the project not provide the expected public benefit for its expected lifespan.

Any organisation/community group seeking funding needs to have its own bank account.

October 2016

This page is intentionally left blank



To: **North Area Committee – 2nd March 2017**

Report by: Jackie Hanson
Community Funding & Development Manager
Community Services

Wards affected: Arbury, East Chesterton, King's Hedges, West Chesterton

BUILDING STRONGER COMMUNITIES: Draft Community Centres Strategy

1. Executive summary

- 1.1 In October 2015 the Executive Councillor for Communities, Arts & Recreation made a decision to undertake a strategic review of community provision. Subsequent decisions have been taken to agree progress at each stage and an update was provided to all Area Committees in March/April 2016 on the initial findings of the city-wide audit of community facilities.
- 1.2 Following the review of existing provision and a needs assessment, a [draft Community Centres Strategy](#) has been developed with the overarching theme of 'Building Stronger Communities'. A review of Council community development resources and funding will follow. The Council is now in a position to consult more widely on the draft Community Centres Strategy, and to begin detailed work to develop specific, deliverable proposals.
- 1.3 This report provides an overview of the recommendations in the draft strategy and the consultation plan.

2. Recommendations

The North Area Committee is recommended to:

- 2.1 Note the emerging proposals in the draft Community Centres Strategy detailed in section 3.
- 2.2 Note the consultation plan and opportunities for people to feedback their comments on the draft strategy detailed in section 5.

3. Building Stronger Communities – Draft Community Centres Strategy

- 3.1 Four key principles underpin the development of the recommendations in the draft strategy:
- They will provide the Council with a clear corporate steer now and for the future
 - They are supported by robust evidence to target resources at known need in the city
 - They will support change from current provision to the future vision in a supportive way
 - They have been developed in a way which will seek to avoid creating instability for the local community as changes are implemented

3.2 The recommendations have been developed to ensure that community provision meets changing needs of the city as it evolves and continues to grow. The emerging proposals are not set in stone, and are being consulted on to seek comments and feedback that will help shape final recommendations.

3.3 The draft proposals (Map attached: Appendix A)

- a)** Build a new community centre ('Hub') on the site of the existing Meadows Community Centre (Arbury ward).
- This will improve, but not reduce, community facilities available to provide the services currently offered by The Meadows and nearby Buchan Street Neighbourhood Centre (King's Hedges ward)
 - This proposal will also consider potential for a wider range of services and an opportunity for housing
- b)** Look into the feasibility of being able to provide more housing through the redevelopment of council-owned land currently occupied by Buchan Street Neighbourhood Centre, and by reducing the footprint occupied by The Meadows Community Centre
- c)** Explore opportunities to enhance facilities in King's Hedges ward, as current provision at Nun's Way Pavilion and 37 Lawrence Way is restrictive in terms of size, location and accessibility
- d)** Improve facilities at Akeman Street (Arbury ward) or a more suitable redeveloped site nearby
- e)** Invite voluntary sector organisations to take on the management of community centres in some areas: Ross Street Community Centre (Romsey ward), Buchan Street Neighbourhood Centre (King's Hedges ward) and Nun's Way Pavilion (King's Hedges ward)

- f) Retain Brown's Field Youth and Community Centre (East Chesterton ward) as a city council managed community centre
- g) Continue to provide community facilities at Trumpington Pavilion (Trumpington ward) in partnership with Trumpington Residents' Association
- h) Meet the needs of new communities by helping to provide new community facilities in growing areas of the city such as Clay Farm in the South West development area (Trumpington ward), and Storey's Field in the North West development area (Castle ward)
- i) Address gaps in the provision of community facilities in Abbey, Cherry Hinton, East Chesterton and Queen Edith's wards

4. Background

- 4.1 The Council recognises the importance of accessible community facilities to provide services and activities to meet the needs of city residents and values the significant number of community facilities provided by a range of different organisations. There are over 100 venues across the city. Work is underway exploring options to make information collected as part of the review available for wider public use.
- 4.2 The Council currently owns eight community centres, of which:
- Five are managed directly (The Meadows, Buchan Street, Brown's Field, Ross Street, and 82 Akeman Street).
 - Three are managed by local groups (Trumpington Pavilion, 37 Lawrence Way and Nun's Way Pavilion).
- 4.3 Three new community centres are under development, two of which are expected to open in 2017-18:
- Clay Farm - new provision for the Southern Fringe growth area. The centre will be run in a joint enterprise with Cambridgeshire County Council, providing a multi-agency community hub.
 - Storey's Field – new provision for the North West Cambridge growth area. The centre will be run jointly by the University of Cambridge and Cambridge City Council via a joint venture, the Storey's Field Community Trust.
 - Darwin Green will be new provision for the NIAB North West Cambridge growth area. The building start date is not yet confirmed.
- 4.4 Since the last update to Area Committees a significant amount of work (detailed in Appendix B) has been undertaken to enable the draft Community Centres Strategy to be developed, which seeks to achieve the following vision:

- Council supported community centres are located in the right areas of the city to address the greatest needs
 - They are financially sustainable and provide accessible, joined up services to residents
 - They effectively contribute to the delivery of the Council's corporate priorities in a cost efficient way
 - The Council has successful partnership arrangements in place with the voluntary sector and other agencies, that meet the needs of local communities
- Council community development resource and activities are flexible to meet changing needs of the city

4.5 The Council's vision 'One Cambridge – Fair for All' highlights an ambition for the City '*to be a great place to live, learn and work...where all local households can secure a suitable, affordable local home, close to jobs and neighbourhood facilities*'. As such, meeting housing need is a high priority for the Council, and the local devolution deal offers an opportunity over the next five years to deliver 500 new Council homes. Therefore, whilst this is a review of community provision, there is also opportunity for corporate consideration about making best use of Council assets. This review has looked at options for best use of land, and whether opportunities can be created for the provision of new affordable Council housing without loss of essential community provision.

4.6 On 19th January 2017, the Community Services Committee considered the draft strategy and the Executive Councillor for Communities agreed to consult more widely on its proposals, and to begin detailed work to develop specific, deliverable proposals.

5. Consultation Plan

5.1 The public consultation to enable feedback on the draft proposals was launched week commencing 13th February 2017 for a 12 week period and will close at noon on 5th May 2017. It can be found [here](#) on Cambridge City Council's website.

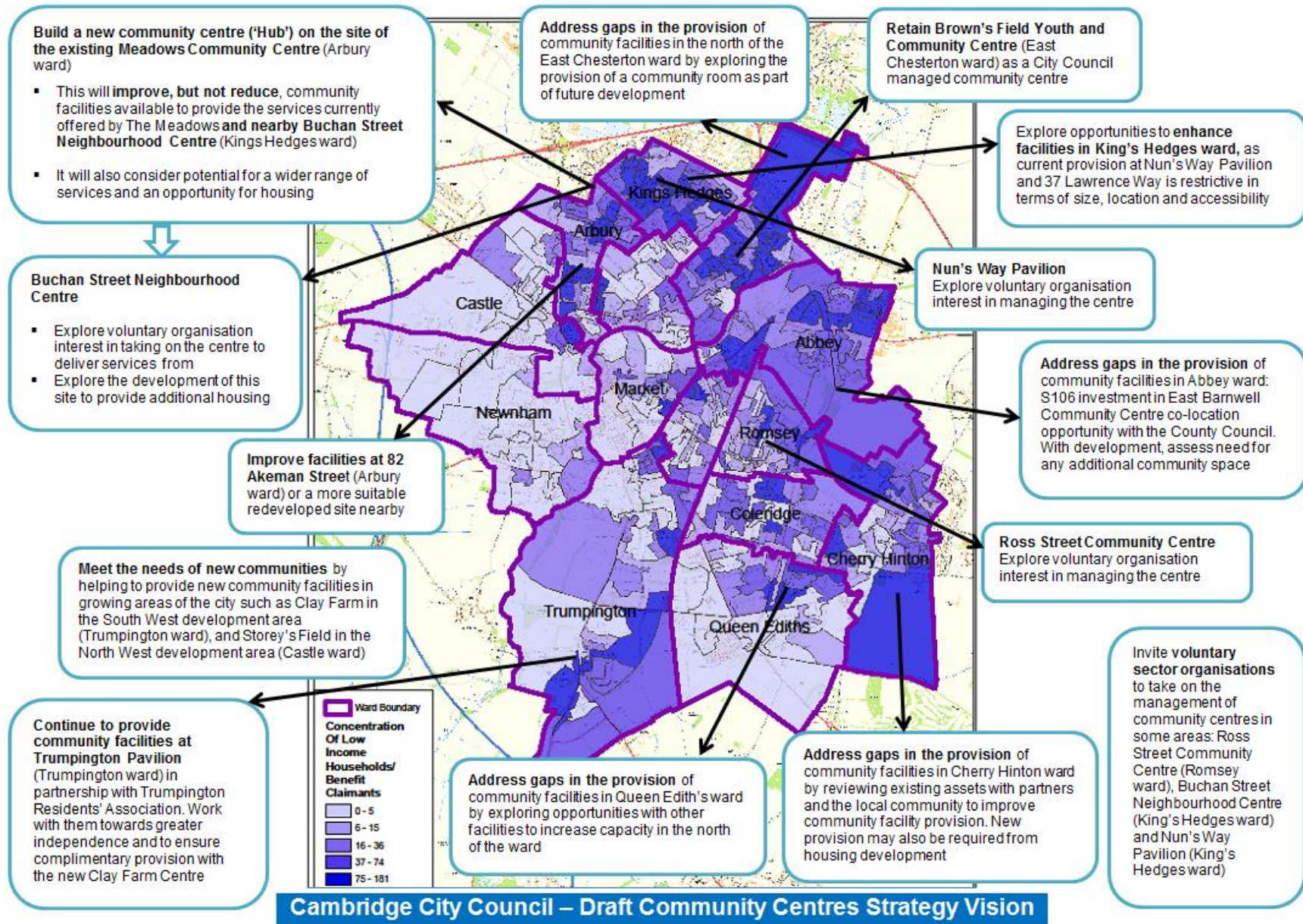
5.2 A wide range of methods have been used to promote the consultation to provide opportunities for residents, equalities groups, voluntary sector organisations, and partners to participate in the consultation, including: a press release, newsletters, social media, networking lunches, letters, leaflet drops, posters, website, and via other organisations.

5.3 Drop in sessions are being held before Area Committee meetings and at community centres (detailed in Appendix C).

6. Next Steps

- 6.1 Consultation on the draft strategy and proposals will close noon on 5th May 2017, and the findings will be used to review the draft proposals.
- 6.2 An update report and final Community Centres Strategy will be considered by Community Services Scrutiny Committee on 29th June 2017.

Appendix A – Vision Map



Appendix B

A. Methodology – the Community Facilities Audit, Mapping and Analysis

- A.1 Audit work has been undertaken to develop a comprehensive evidence base of community facility provision across the city. For the purpose of this review, a community centre or community facility is defined as being: a building that is available for use by the wider community, and/or for hire by local groups for a range of community/social activities and meetings, for at least some of their opening hours each week. The facilities have to be accessible to everyone, particularly those covered by the protected characteristics of the Equalities Act 2010¹.
- A.2 The audit included surveys, follow up calls, and drop ins at Area Committee meetings.
- A.3 Including the Council's community centres, 107 facilities met the criteria to be included as a community centre or facility for the purposes of this review. This is a cautious estimate of provision across the city as some facilities did not respond to the verification process.
- A.4 The audit identified that many groups are unaware of the community facility offer across the city. The strategy recommends further work to improve the promotion of facilities.
- A.5 The 107 verified community facilities were mapped by postcode and colour coded to distinguish:
- City Council community centres
 - Other community facilities whose primary purpose is a community facility
 - Other community facilities whose primary purpose is not community facility provision e.g. church, school
- A.6 Maps were overlain with data on population density and on needs. This is based on concentrations of low income households and benefits claimants.
- A.7 GIS² Network Modelling was used to identify 15-minute walk time³ catchments for dedicated community facilities, whether owned by the Council or not. Non-dedicated facilities were not mapped at this stage as their availability and offer for community use varied significantly. However, it is recognised that in some communities these provide important capacity.
- A.8 New facilities under development were not mapped for real walk-time as no road or pavement network information is available yet for these sites. The analysis for these has been based on a 15 minute walking radius around the facility.
- A.9 The walk-time catchments maps were analysed to identify:
- Geographic needs (no community facility within a 15 minute walk-time)
 - Demographic needs (high concentrations of low income families and benefit claimants)
- A.10 Further stakeholder analysis was used to understand the strategic importance of Council-owned centres in meeting Council priorities.

¹ <https://www.gov.uk/discrimination-your-rights/types-of-discrimination>

² Geographic Information System

³ Travel time of 3mph, covering 0.75 miles in 15 minutes Reference: <https://www.bhf.org.uk/get-involved/events/training-zone/walking-training-zone/walking-faqs>

- A.11 Alternative land uses were considered, including options for commercial or housing development as well as enhanced community provision.
- A.12 This identified inter-dependencies between facilities serving similar catchment areas. Additional risk assessment and scenario planning was therefore undertaken for three sets of Council community centres identified with inter-dependencies.
- A.13 From the analysis of information and risk assessments, the Council's community centres were categorised as either:
- Core (strategically important, need to be retained and/or further developed);
 - Transitional (less strategically important because they serve less disadvantaged communities or overlap with other centres); or
 - Independent (centres which are already delivering services with little or no Council support)
- A.14 The categorisation process will help form recommendations for the future of the Council's community centres. For example, in developing core centres, or new facilities to address gaps, the Council may work with the County Council and others to consider multi-agency hubs. In reviewing transitional centres, the Council will work with other providers to explore options for community management.

B. Partnership and Joined Up Working

- B.1 Voluntary organisations and community groups were contacted to explore issues of community management. A number of organisations have submitted initial expressions of interest in taking over the running of all, or part, of a Council community centre. This opportunity was also promoted on the Council website.
- B.2 In considering how facilities are managed, the Council will explore alternative management arrangements which could be community led and which could allow buildings to be managed by, or even have ownership transferred to, community organisations. Such arrangements would require appropriate safeguards to ensure access and broad-based community programming.
- B.3 The Council is exploring ways to deliver services by working in partnership. This will include dialogue with statutory partners to consider how services may be efficiently and conveniently co-located.
- B.4 The new facilities at Clay Farm have been developed on a community hub model with the County Council and health providers co-locating services alongside the City Council. This joint planning approach and delivery model provides a more sustainable basis for the long term funding requirement for the building and staffing, and simplified access to services for residents.
- B.5 No recommendations have been made regarding any changes required to the buildings for the three new community centres: Clay Farm, Storey's Field and Darwin Green. These have all evolved from growth-related master-planning, and are categorised within the review as Core Centres. They are currently at different stages in the design, planning and development process. They will be considered as part of the review assessing the outreach community development priorities.

Appendix C – Consultation Drop In Sessions Information



The City Council has produced a draft Community Centres Strategy which proposes a positive and ambitious vision for improved council-owned community facilities, based on evidence of need, across the city. The aim is to strengthen provision, particularly where need is greatest, rather than reduce it.

We would like your views on these draft proposals

Closing date: 12 noon 5th May 2017

The Council's community centre provision has developed over a number of decades, and a review was needed to make sure that they:

- continue to meet the changing needs of the city
- are located in the right areas of the city to address the greatest needs
- are sustainable, and provide accessible, joined up services to the residents who most need them

Complete the online survey on the Council's website: <https://www.cambridge.gov.uk>

Drop in to any of the following sessions to speak to us and find out more

Thursday 2nd March	6pm – 7pm	Before North Area Committee	Shirley Primary School Nuffield Road, Cambridge, CB4 1TF	+ Report during committee
Thursday 9th March	6pm – 7pm	Before West Central Area Committee	St Augustine's Church Richmond Road, Cambridge, CB4 3PS	+ Report during committee
Monday 20th March	1pm – 7pm	At the centre	The Meadows Community Centre , 1 St Catharine's Road, Cambridge CB4 3XJ	++ 5.30pm presentation
Wednesday 22nd March	1.30pm - 7pm	At the centre	37 Lawrence Way Community House , Cambridge CB4 2PR	++5.30pm presentation
Thursday 30th March	1pm – 7pm	At the centre	Buchan St Neighbourhood Centre , 6 Buchan Street, Cambridge CB4 2XF	++ 5.30pm presentation
Thursday 6th April	6pm – 7pm	Before East Area Committee	Cherry Trees Day Centre St Matthew's St, Cambridge CB1 2LT	+ Report during committee
Tuesday 18th April	1pm – 7pm	At the centre	Ross Street Community Centre , Ross Street, Cambridge CB1 3UZ	++ 5.30pm presentation
Monday 24th April	6pm – 7pm	Before South Area Committee	St John the Evangelist Church , Hills Road, Cambridge, CB2 8RN	+ Report during committee

+ There will be a report on the strategy (available on the Council's website) presented during the committee meetings following the drop in session

++ There will be a presentation about the strategy on the centre dates at 5.30pm which will last about 10 minutes followed by questions

Surveys are available at Council managed Community Centres or by contacting:
community.review@cambridge.gov.uk or 01223 457862

This page is intentionally left blank



To: **North Area Committee - 2nd March 2017**

Report by: Jackie Hanson
Community Funding & Development Manager
Community Services

Wards affected: Arbury, East Chesterton, King's Hedges, West Chesterton

AREA COMMITTEE COMMUNITY GRANTS 2017-18

1. Executive summary

1.1 This report details applications received to date for 2017-18 funding for projects in the North Area, makes recommendations for awards and provides information on the eligibility and funding criteria.

2. Recommendations

The North Area Committee Councillors are recommended:

- 2.1 To consider the grant applications received, officer comments and proposed awards, detailed in Appendix 1, in line with the Area Committee Community Grants criteria, detailed in paragraph 3.5.
- 2.2 To agree the proposed awards detailed in Appendix 1 and summarised in the table below:

Ref	Organisation	Purpose	Award £
N1	50+ Friends	Monthly meetings and bi-monthly cooking sessions	260
N2	Asian Women's Group	Weekly meetings	100
N3	Bermuda Community Room	20 winter teas and 15 winter suppers	850
N4	Cambridge & District Citizens Advice Bureau	Extension of 2016 outreach service	4,000
N5	Cambridge Gymnastics Academy	Weekly freestyle gymnastics class	3,000
N6	Chesterton Community Association	Summer outing for families and older people	490
N7	Chesterton Festival	Chesterton Festival 2017	2,500
N8	DEARA (Darwin, Erasmus, Akeman Street Resident's Association)	Street party	500

N9	Friends of Histon Road Cemetery	Information and activities	800
N10	Good Sounds	Weekly singing sessions	350
N11	Grove Community Swimming	Free-play swimming sessions	1,000
N12	Illuminate Charity	Confidence and personal development coaching	1,000
N13	King's Hedges Brownies	Two trips to Woburn Safari Park and bowling in St Ives	400
N14	King's Hedges Guides	Climbing activity session	200
N15	Meadow's Bowlers	Weekly indoor bowls sessions	500
N16	The Meadow's Children & Family Wing	3 x 6 week disadvantaged women's programme	3,000
N17	Not Quite Over the Hill Club	Mystery tour, holiday seaside outings	200
N18	Romsey Mill	Media video project	3,000
N19	Royal British Legion Arbury	Day trip to Lowestoft	450
N20	St George's Over 60's Club	Transport; volunteer petrol expenses; annual event costs	200
N21	Sunshine Group	Day trips using Dial-a-Ride	200
N22	The Red Hen Project	2 summer outings	1,600
N23	Young People's Puppet Theatre	Puppet theatre project in Shirley School	0

Budget available	£ 24,920
Total awards	£ 24,600
Budget remaining	£ 320

3. Background

- 3.1 Funding has been devolved to Area Committees for local projects meeting the Community Development, Sports or Arts strategic priorities since 2004. This process is managed by the Grants Team in Community Services who promote the funding and bring applications for consideration to one meeting of each of the area committees annually.
- 3.2 The 2017-18 grants were publicised via neighbourhood workers, in local publications and voluntary organisations newsletters and by posters and publicity leaflets. Recent applicants are also sent information. 11 people representing 10 organisations attended a briefing held to explain the application process and eligibility criteria and priorities.
- 3.3 There is a total of £70,000 available across the four area committees for 2017-18 made up as follows:
- £60,000 Community Grants
 - £10,000 Safer City

- 3.4 The budgets have been divided between the area committees in accordance with population and poverty calculations. The Safer City allocation has provided and additional £2,500 for each area committee. The amount available for each area is as follows:

Committee	Community Grants %	Community Grants £	Safer City £	Total available £
North	37.37	22,420	2,500	24,920
East	31.95	19,170	2,500	21,670
South	20.65	12,390	2,500	14,890
West Central	10.03	6,020	2,500	8,520
Total	100	60,000	10,000	70,000

3.5 Area Community Grant Priorities and Outcomes

Projects and activities should have a targeted approach and make a difference to people in one of the areas (North, South, East or West Central) by either:

- reducing social or economic inequality or
- tackling crime, the fear of crime or anti-social behaviour

and by undertaking one of the following funding priorities:

- sporting activities
- arts and cultural activities
- community development activities
- legal and/or financial advice (*organisations applying to give legal advice and support must have The Advice Quality Standard (AQS) or equivalent*)
- employment support
- capacity building of the voluntary sector to achieve the above
- community projects aiming to tackle crime, the fear of crime or anti-social behaviour

- 3.6 Applications are invited from voluntary organisations, community groups and groupings of local residents that are able to meet basic accountability requirements.

- 3.7 The maximum any one organisation can apply for is £5,000 per area committee and grants cannot be made retrospectively. Full details of the eligibility criteria are available on request.

- 3.8 Where no funding is proposed it will be due to one or more of the following not being adequately met:

- grant scheme priorities
- grant scheme outcomes

- identifying need
- quality or viability of the project

or

- proposals were the remit of another service or organisation such as the County Council, Health, Housing etc
- organisations did not demonstrate the beneficiaries could not fund the activity themselves, or that reserves could not be used to fund the activity

- 3.9 All awards are subject to funding agreements and monitoring reports. We consider proportionate requirements dependent on the size of the organisation, project and award.
- 3.10 Applications made after the main grants round will be considered on an individual basis until all the funding is spent. Officers will make decisions on awards up to £5,000 as approved by the Community Services Scrutiny Committee in January 2014.
- 3.11 In December 2017 the area budgets will be merged and any funding remaining will be allocated across the areas as applications are received, to ensure effective use of the funds available.
- 3.12 After the end of the financial year we will collect the monitoring reports for awards made during 2016-17 and circulate a summary to members. A list of awards to date for 2016-17 is attached as Appendix 2.

Appendix 1 - North Area Committee Community Grant - Applications and Recommendations 2017-18

Ref	Organisation	Purpose	Aim & disadvantage outcome	Beneficiaries	Budget	Bid	Award
N1	50+ Friends	Monthly meetings; bi-monthly affordable meal. Based at 82 Akeman Street	Reduce social isolation, improve mental and physical wellbeing, develop cohesion and integration within local community and reduce inequality through provision of an affordable, nutritious meal.	12 Arbury older people, some with disabilities and low income.	Full cost: £907 Income: £540 + reserves	£260	£260
	Officer comment	Recommend £260 towards monthly meetings and bi-monthly cooking sessions.					
	Previous 2 years funding: 2016-17: £800						
N2	Asian Women's Group	Weekly meeting costs (room hire). Based at 82 Akeman Street. Include some intergenerational sessions with younger Asian women	Reduce social isolation and improve wellbeing; overcomes cultural/religious/language barriers that means the women are unable to attend other local groups. Free meetings address economic disadvantage	20 Bengali women (age 50+)	Full cost: £715 Income: £120 + reserves	£315	£100
	Officer comment	Recommend £100 contribution. Reserves and underspend last year					
	Previous 2 years funding: 2016-17: £500						
N3	Bermuda Community Room	Contribute to cost of 20 winter teas and 15 winter suppers for local residents	Bringing local people together, leading to a cohesive community. Reduce social isolation and mental health problems. For many low income residents meeting locally is the only outside activity they attend. Those with mental health problems find it difficult to travel distances during winter months	87 mainly older generation including some people with disabilities (52 Arbury, 35 King's Hedges)	Full cost: £2,087 Income: £500 + reserves	£850	£850
	Officer comment	Recommend £850 contribution					
	Previous 2 years funding: 2016-17: £450, 2015-16: £500						

Ref	Organisation	Purpose	Aim & disadvantage outcome	Beneficiaries	Budget	Bid	Award
N4	Cambridge & District Citizens Advice Bureau	Extension of 2016 outreach service - combining free legal advice with free money advice at weekly drop in sessions. Currently at The Meadows Community Centre	Enable people facing financial hardship and/or legal difficulties and associated social and health problems to tackle their issues and learn how to better manage the issues themselves in the future. Will lead to reduced social and/or economic inequality, improved mental health and improved quality of life.	180 (70 Arbury, 30 East Chesterton, 50 King's Hedges, 30 West Chesterton)	Full cost: £12,217 Income: £7,217	£5,000	£4,000
	Officer comment	Recommend contribution of £4,000					
	Previous 2 years funding: 2016-17: £3,000 plus funding from main Community Grant programme						

N5 Page 74	Cambridge Gymnastics Academy	Freestyle Gymnastics class on a Friday youth night (age 14-25) x 48 weeks based at North Cambridge Academy	Project very successful in 2016. Many families low income. Targeting through North Cambridge Academy where 50% young people have negative home lives.	32 young people age 11-25 (85% Arbury; 5% East Chesterton; 5% King's Hedges; 5% West Chesterton)	Full cost: £7,734 Income: £2,304	£5,000	£3,000
	Officer comment	Recommend: £3,000 contribution. Award to target low income beneficiaries and specific equipment					
	Previous 2 years funding: 2016-17: £2,000						

N6	Chesterton Community Association	Summer outing for families and older people	Many families find it difficult to organise long journeys by public transport even if the fares are affordable. Reduces social isolation as some are older with limited mobility - good cross section of the community goes along.	77 people including families with children; older people with limited mobility	Full cost: £925 Income: £385	£490	£490
	Officer comment	Recommend £490 contribution					
	Previous 2 years funding: 2016-17: £460, 2015-16: £787						

Ref	Organisation	Purpose	Aim & disadvantage outcome	Beneficiaries	Budget	Bid	Award	
N7	Chesterton Festival	Chesterton Festival 2017; specifically the Community Fun Day on Saturday 17 th June	Celebrate the diversity of Chesterton and encourage people to explore what is available locally in terms of social, education, recreation and other activities	3,900 (200 Arbury; 2,000 E, 1,000 W Chesterton, 400 King's Hedges); 300 East	Full cost: £5,841 Income: £3,300 + reserves	£2,500	£2,500	
	Officer comment	Recommend £2,500 contribution. Award to target disadvantaged residents						
	Previous 2 years funding: 2016-17: £2,500, 2015-16: £3,240							

N8	DEARA (Darwin, Erasmus, Akeman Street Resident's Association)	Street party including preparation meetings and follow up events	Promote community cohesion; positive activity; reducing social isolation; tackling crime; the fear of crime and anti-social behaviour	150-200 (Arbury)	Full cost: £1,431 Income: £150 + reserves	£741	£500	
	Officer comment	Recommend: £500 contribution – equipment loan potential						
	Previous 2 years funding: 2016-17: £800							

N9 Page 75	Friends of Histon Road Cemetery	Information and activity: newsletters, website, publicity, meetings and events	Protect and enhance the Cemetery for public benefit, ensure public access to the Cemetery. Surveys show need to sustain active community involvement	2,000 (300 Arbury; 400 E + 800 W Chesterton) 500 W Central	Full cost: £2,825 Income: £1,625	£1,200	£800	
	Officer comment	Recommend: £800 contribution (and £400 from West Central Area Committee)						
	Previous 2 years funding: 2016-17: £400, 2015-16: £1,200							

N10	Good Sounds	Weekly singing sessions (room hire and refreshments) plus musical instruments, workshops, travel expenses to performances. Based at Akeman Street	Encourage community cohesion, bring together people who might not ordinarily connect with each other; reduce social isolation; promote co-operation, build confidence, self-esteem; enrich mental and physical wellbeing; encourage personal responsibility; enable low income residents to join an activity	10-20; 7 Arbury, 2 Kings Hedges	Full cost: £1,514 Income: £800 + reserves	£414	£350	
	Officer comment:	Recommend: £350 contribution.						
	Previous 2 years funding: 2016-17: £500							

Ref	Organisation	Purpose	Aim & disadvantage outcome	Beneficiaries	Budget	Bid	Award
N11	Grove Community Swimming	2 x one hour Saturday morning, term time, free-play swimming sessions (33 sessions per year) at the Grove pool. Up to 27 per session	Funding would pay for half the users to attend sessions at no charge. Aim to provide reduced cost entry to people who would be unable to afford the costs of travel to and entry to a council pool.	50+, 15 Arbury, 5 East Chesterton, 15 Kings Hedges, 15 West Chesterton Children under 6 + parents / carers	Full cost: £2,000. Income: £1,000	£1,000	£1,000
	Officer comment:	Recommend: £1,000 contribution to target low income families					
	Previous 2 years funding: New group						

Page 76 N12	Illuminate Charity	4 day personal development programme combining group work and 1:1 coaching sessions.	Developing skills to bring participants with significant barriers to employment / access to progression routes closer to economic activities.	10 North disadvantaged people with multiple issues + 2 South Cambs	Full cost £5,140 Income: £3,940	£1,200	£1,000
	Officer comment:	Recommend £1,000 for beneficiaries from the North					
	Previous 2 years funding: 2016-17: £1,000 main round , 2015-16: £1,000 main round						

N13	King's Hedges Brownies	Two trips to Woburn Safari Park and bowling in St Ives	The trips provide an opportunity for the Brownies to leave their local estate, something other children take for granted in Cambridge. Lots of the children don't have holidays or trips as many parents are unable to take them	25 girls aged 7-10 (15 Arbury, 10 King's Hedges). Including children with special needs	Full cost: £962.53 Income: £700	£160	£400
	Officer comment	Recommend £400 contribution as <i>ambitious income target, support for low income families</i>					
	Previous 2 years funding: 2016-17: £400, 2015-16: £500						

Ref	Organisation	Purpose	Aim & disadvantage outcome	Beneficiaries	Budget	Bid	Award
N14	King's Hedges Guides	Climbing activity session at Clip n Climb Cambridge	Provide an affordable opportunity for young girls from low income families to try a climbing activity. For many it will be the only opportunity to try the activity	20 girls aged 10-14 years (10 Arbury, 9 King's Hedges, 1 Chesterton)	Full cost: £300 Income: £100	£200	£200
	Officer comment	Recommend £200 contribution					
	Previous 2 years funding: 2016-17: £250						

N15	Meadow's Bowlers	Hall hire for weekly indoor bowls sessions at The Meadows	To get out of the house, meet people, have fun and socialise. Reduce isolation and be active.	15 Arbury older people some with disabilities.	Full cost: £1,295 Income: £795	£500	£500
	Officer comment:	Recommend £500					
	Previous 2 years funding: 2016-17: £500, 2015-16: £1,000						

N16 Page 77	The Meadow's Children & Family Wing	Programme of family activities - drop-in sessions for families with pre-school children; 2 weekly term-time clubs for children age 5-11; 3 x 6 week programme for 8 disadvantaged women	Reduce social isolation; improve health and wellbeing; reduce inequality for those on low incomes; enable local families to have a say in local services. Users are particularly disadvantaged	730 families (360 Arbury, 15 E. Chesterton, 355 Kings Hedges)	Full cost : £56,449 Income: £45,000	£5,000	£3,000
	Officer comment	Recommend £3,000 contribution for All About Me courses..					
	Previous 2 years funding: 2016-17: £5,000, 2015-16: £1,217 Receive main grant						

N17	Not Quite Over the Hill Club	Towards cost of coaches for trips for the social club for over 55's which meets at Arbury Community Centre	Reduce isolation by providing 4-5 excursions.	86 older people (most 70 - 80). 84 Kings Hedges, 2 East Chesterton	Full cost: £3,414 Income: £2,205 + reserves		£200
	Officer comment	Recommend £200 contribution. Reserves					
	Previous 2 years funding: high reserves						

Ref	Organisation	Purpose	Aim & disadvantage outcome	Beneficiaries	Budget	Bid	Award		
N18	Romsey Mill	Young people's media project. Develop skills to edit and produce videos & understand potential risks of putting content online. Weekly sessions x 5 hours; group and 1:1 work	Reduce social isolation; increase confidence; learn new skills; increase self-esteem & motivation. Vulnerable young people will be safer and more secure. Beneficiaries with difficult home situations, mental health issues and anti-social behaviour are at risk of isolation and exclusion from mainstream society and school.	25 11-18 year olds (10 Arbury; 5 East Chesterton; 5 King's Hedges; 5 West Chesterton)	Full cost £14,445 Income: £6,546 + reserves	£4,920	£3,000		
								Officer comment	Recommend £3,000 contribution
								Previous 2 years funding: 2016-17: £2,500	

N19 Page 78	Royal British Legion Arbury	Coach costs for a trip to Lowestoft	Give members a day out. Most members are disabled + elderly; few could manage public transport - unable to get out without help. Many live on a restricted income and live very lonely lives.	30 older people (8 Arbury; 10 E + 8 W Chesterton, 4 King's Hedges).	Full cost: £450 Income: £0	£450	£450		
								Officer comment	Recommend £450 contribution
								Previous 2 years funding: 2016-17: £300 2015-16: £440	

N20	St George's Over 60's Club	1. Transport for Christmas lunch, Dial a Ride or coach 2. Volunteer petrol expenses for member to pick up for meetings 3. Costs of annual summer event	Reducing isolation and introducing members to a variety of speakers - includes local interest and also information such as hearing help. Members say how much they miss meetings in the winter / summer breaks. Transport is provided for members who cannot get to meetings on their own.	48 elderly people, some with disabilities. (46 North, 2 East)	Full cost: £2,240 Income: £1,734 + reserves	£500	£200		
								Officer comment	Recommend £200 contribution. Reserves
								Previous 2 years funding: 2016-17: no application 2015-16: £50	

Ref	Organisation	Purpose	Aim & disadvantage outcome	Beneficiaries	Budget	Bid	Award
N21	Sunshine Group	Day trip to Bury St Edmunds and a trip to Horningsea using Dial-a-Ride	Many members in 80s, one 89, 4 have very poor mobility; 1 wheelchair user. Dial-A-Ride enables wheelchair access to the trips. A day trip will give them some company and not to be alone.	13 older people many over 80 (2 Arbury, 9 East Chesterton, 1 Kings Hedges, 1 West Chesterton)	Full cost: £230 Income: £30	£200	£200
	Officer comment	Recommend £200 contribution					
	Previous 2 years funding: 2016-17: £300, 2015-16: £100						

Page 79	N22	The Red Hen Project	2 summer outings for families who would otherwise struggle (financially or socially) to take their children on day trips or holidays	Targeting families who have problems accessing education through family difficulties or crises. Low income, confidence, self-esteem, lack of transport, social isolation. Previous feedback states 36% said that these would be the only trips / holidays they would have.	200 people / 50 families 106 per trip	Full cost: £3,000. Income : £1,400	£1,600	£1,600
		Officer comment	Recommend £1,600					
		Previous 2 years funding: 2016-17: £0, 2015-16: high reserves						

N23	Young People's Puppet Theatre	Two year-long projects with 2 x Year 6 classes designing and building puppets working towards the creation and delivery of a full scale theatre production at Shirley School performed by the children	Classes include many children from disadvantaged backgrounds who find academic work difficult, lack concentration, drive and ability to work in a team. Practical and social benefits for the children, developing skills/characteristics that will help them through the last year of primary school & ease transition to secondary school - self-confidence, resilience, problem solving, team work.	60 Year 6 children. 20% traveller, 50% minority ethnic, above average eligibility for school meals. Particular benefit to ESL children	Full cost: £8,150 Income: £3,150 contribution from school	£5,000	£0
	Officer comment	No funding in the school day and part of curriculum time					
	Previous 2 years funding: no application						

Appendix 2: 2016-17 Awards

Organisation	Purpose	Award £
50+ Friends	Monthly meetings and cooking project	800
Arbury Carnival Committee	Arbury Carnival 2016	2,000
Arbury Townswomen's Guild	10 monthly meetings	200
Asian Women's Group (formally Bengali Older Women)	Weekly meetings	500
Bermuda Community Room	18 winter teas and 12 suppers	450
Bridho Society	Four trips	200
Cambridge & District Citizen's Advice Bureau	Money and legal advice outreach project	3,000
Cambridge Gymnastics Club	Freestyle group and Friday youth night	2,000
Chesterton Community Association	Summer outing	460
Chesterton Festival Committee	Chesterton Festival 2016	2,500
DEARA (Darwin, Erasmus, Akeman Street Residents Association)	Street Party	800
Friends of Histon Road Cemetery	Running costs - newsletter, website, insurance, meetings and events	400
GAP Learning CIC	2 'start your own' creative business courses	1,500
Good Sounds	Weekly singing sessions	500
King's Hedges Brownies	3 trips	400
King's Hedges Guides	1 seaside trip and gymnastics session	250
Knitted Together	Weekly knitting group	200
Meadows Centre Bowlers	Weekly bowls session.	500
The Meadows Children & Family Wing	Family activity programme and 6 week programme "All about Me"	5,000
Romsey Mill	Girls group; trips; residential	2,500
Arbury Manor Branch, Royal British Legion	Coach hire for day trip	300
The Sunshine Group	Two trips	300

Environmental Report: Cambridge North Area December 2016 to February 2017

Briefing note:

Officers have undertaken work on the priorities previously set, and in light of the evidence found over the last three months have recommended a change in some of the areas of work for the upcoming period.

Changes include:

- Adding areas for fly tipping patrols at: Hazelwood/Molewood Close area, Church Street recycling centre and Edgecombe/ Cadwin field area.
- Changing dog fouling patrols to focus on Perse Way area
- Introducing a new priority to tackle littering outside shops on Chesterton High Street

The report sets out the statistical data for Environmental Health, Enforcement, Streets and Open Spaces Operations and Waste over the period of December 2016 to February 2017.

A small quantity of recycling and general street litter bins, and dog poo bins are stills available for each ward.

Any queries on the report can be directed to Wendy Young (01223 458578 or wendy.young@cambridge.gov.uk)

This page is intentionally left blank

Environmental Report



Cambridge North Area December 2016 to February 2017

Contents

1. Introduction	3
2. Target setting and recommendations.....	3
3. Routine activity.....	4
4. Specific issues and actions	5
5. Environmental Data	7
Private Realm [North Area]	7
Public Realm Data	8
Public Realm Enforcement [North Area]	8
Dog Warden Service [North Area].....	10
Operations cleansing data by ward [North Area].....	11
Waste and Recycling Data [City wide]	13
6. Proactive and community work	14
7. Key contacts	15
Officers.....	15
Issues.....	16
8. Resources.....	17

1. Introduction

This report provides an overview of City Council Refuse and Environment and Streets and Open Spaces service activity relating to the geographical area served by the North Area Committee. The report identifies the reactive and proactive service actions undertaken in the previous year, including the requested priority targets and reports back on the recommended issues and associated actions to be targeted in the following period. It also includes key officer contacts for the reporting of waste and refuse and public realm issues.

2. Target setting and recommendations

All those at Committee have an opportunity to suggest issues that they would like to see tackled in the neighbourhood area during the upcoming period to help shape the activity to be undertaken within the public realm. Following suggestions that are received the relevant teams will consider the suggestions, and will prioritise work, responding reactively where appropriate and programming some work for the future. All suggested targets will be reported back on in the following period to update members and the public on the status of the issue. Recommendations will also be presented to the committee for consideration and to aid discussion.

Recommendations

The following are suggestions for members on what action could be considered for priority within the North Area for the upcoming period commencing March 2017.

Continuing priorities*

Number	Priority details
1	Enforcement patrols to tackle fly tipping on communal archways and green areas at Minerva Way area (including Augustus Close, Hercules Close, Neptune Close and Apollo Way), Arbury Court, Nicholson Way area (including Albemarle Way, Hanson Court and Walker Court) <i>Hazelwood/Molewood Close area, Church Street recycling centre and Edgecombe/ Cadwin field area.</i>
2	Patrols to address dog fouling on <i>Perse Way</i> area including early mornings, evenings and weekends

New priorities

Number	Priority details
3	Enforcement patrols to tackle littering outside shops on Chesterton High Street

Members are recommended to endorse the above recommendations or to make proposed amendments, and in doing so to consider the community intelligence questions below to help shape the public realm work.

Community intelligence questions

1. What geographical locations would benefit from targeted work? (including public realm enforcement activity and clean-up work by the community payback)
2. What locations for new and replacement general waste, recycling and dog bins (in line with resources available) should be considered?
3. Where and when the dog warden service should patrol in order to target dog fouling?

* Amendments to continuing priorities are shown in italics

3. Routine activity

Streets and Open Spaces teams work closely with residents, community and campaign groups to keep Cambridge clean, green and safe. Street cleansing works to clear shop fronts and maintain all residential streets to a good standard of cleaning by sweeping them regularly. The team empties litterbins and dog bins across the city parks and open spaces, as well as removing graffiti and clearing needles and fly tipping.

The grounds maintenance team maintains all council housing and highway grass and shrub beds across the city, and carries out the maintenance of the city's cemeteries and crematoriums as well as the maintenance of all parks across the city. The City Rangers team provide a street-level, face-to-face contact point for people to raise any cleanliness and public safety issues that they might have concerning their neighbourhood.

The dog warden patrols within Cambridge to increase people's awareness of the requirement to clear up after their pets, as well as collecting stray dogs within the city and works alongside animal charities to deliver educational roadshows. Investigation of instances of environmental crime in public places across the city is carried out by the public realm enforcement team. As well as undertaking enforcement action where necessary, the team provide advice for residents and businesses on issues including fly tipping, litter, waste, illegal advertising, abandoned shopping trolleys, verge parking and abandoned, untaxed and nuisance vehicles.

4. Specific issues and actions

The following specific issues were identified for targeted action in the previous period. The following tables summarise the action undertaken and current situation, whether ongoing or completed, for each issue.

Priority 1	Enforcement patrols to tackle fly tipping on communal archways and green areas at Minerva Way area (including Augustus Close, Hercules Close, Neptune Close and Apollo Way), Campkin Road, Arbury Court, Nicholson Way area (including Albemarle Way, Hanson Court and Walker Court) and Maitland Avenue/ Mortlock Road area.
Action Taken	<ul style="list-style-type: none"> • Approximately 15 hours of patrol time carried out in the Minerva Way area, area also included as part of the fly tip campaign. Four on-going investigations pending further enquiries. Lots of furniture items being dumped often with no evidence • Approximately 9 hours of patrol time carried out in the Campkin Road area, and one fly tipping fixed penalty notice was issued for dumped household waste • Approximately 15 hours of patrol time were spent patrolling Arbury Court, issues also at Arbury Court shops behind butchers so this area has also been included as a hotspot and one fly tipping FPN issued for a resident. One litter FPN issued for domestic litter. One prosecution is currently pending. • Nicholson Way recycling point and Albemarle Way are often fly tipped, approximately 10 hours of patrol time but no on-going investigations, recycling points often fly tipped with furniture items. • At Maitland / Mortlock area, during the period there was one incident of fly tipping in garage block, and reports of vehicles being repaired in garage block, but nothing seen on patrols.
Current Situation:	Ongoing
Priority 2	Patrols to address dog fouling on Kings Hedges “Pulley” Recreation Ground, Nuns Way Recreation Ground and the areas of Blackberry Way and Lawrence Way including early mornings, evenings and weekends
Action Taken	Forty nine patrols lasting just over 29 hours were conducted by the dog wardens and enforcement team during the period; during this time no individuals were witnessed failing to clear up after their dog on the priority areas. Educational advice was provided to dog walkers and individuals that the dog wardens came across on their patrols. Officers have recommended that new areas of priority should be selected and have recommended the Perse Way area for the upcoming period. .
Current Situation:	Completed
Priority 3	Deep cleanse of area at Ashfield Road
Action Taken	A deep cleanse of Ashfield Road has been completed by the Rapid Response team and included litter picking, sweeping and a clearance of the area.
Current Situation:	Completed

Other issues:

Issue	Litter bin on Millennium bridge
Action Taken	<p>A litter and recycling bin have been positioned at the Church Street / Ransome Close end of the bridge for a trial period, during which time their use will be monitored and permanent bins installed should the location provide suitable. Following the most recent area committee these bins were vandalised and set on fire, and subsequently removed.</p> <p>Discussions are ongoing with the county council to look at an alternative bin for the location.</p>
Current Situation:	Ongoing
Issue	Aylestone Road regarding appropriate signage to advertise the 'recycling' shelf.
Action Taken	<p>Officers have been undertaking work in this area to monitor the situation, plans are in place for the upcoming period to look at what suitable signage is available and make arrangements to follow up with the owner of the recycling area.</p>
Current Situation:	Ongoing
Issue	To provide details of follow up action taken after multiple needles dumped in Kings Hedges.
Action Taken	<p>In response to the last report, when 38 needles were removed from Kings Hedges, officers were asked to provide an update on what happens when large volumes of needles are found.</p> <p>In the particular case reported, 38 needles removed from a garden at Campkin Road by a city ranger, which was as part of the proactive work of the ranger and was not a response from residents' enquiries. All data on needles removed by the Streets and Open Spaces Operations teams is reported to the County Council Drug and Alcohol Awareness team.</p> <p>The Drug and Alcohol Awareness team work closely with service users for encouraging appropriate disposal. They also work with doctor surgeries and pharmacies for ensuring adequate provision for disposal are available. In addition to this they also look at trends in data and hotspots to see if it is caused by certain users and if they can put provisions in place for needle disposal shoots (like public toilets).</p>
Current Situation:	Completed
Issue	Primary Court/Scotland Road litter bins
Action Taken	<p>The old bin previously sited at the Primary Court / High Street junction has been removed and replaced with a new bin, and a new recycling bin.</p>
Current Situation:	Completed

5. Environmental Data

Private Realm [North Area]

Period	Activity	Investigations	Treatments Carried out	Informal Action / Written Warnings	Statutory Notices Served	Legal Proceedings
Dec 2015 to Feb: 2016	Noise Complaints	112	N/A	†	5	0
Dec 2016 to Feb: 2017		109			0	0
Dec 2015 to Feb: 2016	Refuse/ Waste Complaints	10	N/A	†	0	0
Dec 2016 to Feb: 2017		6			0	0
Dec 2015 to Feb: 2016	Other public health complaints‡	9	N/A	†	0	0
Dec 2016 to Feb: 2017		6			0	0
Dec 2015 to Feb: 2016	Private Sector housing standards	50	N/A	†	4	0
Dec 2016 to Feb: 2017		46			2	0

Data is from the period 16th November to 14th February

[Pest control data was not available]

† All complaints will generally have at least one such action

‡ Other public health complaints includes odour, smoke, bonfires, filthy and verminous

Public Realm Data

Public Realm Enforcement [North Area]

Period	Activity	Investigations	Written Warnings	Statutory Notices	Fixed Penalty Notices	Simple Cautions	Legal Proceedings
Dec 2015 to Feb: 2016	Abandoned vehicles	44	N/A	N/A	1	0	0
Dec 2016 to Feb: 2017		40			0	0	0
Dec 2015 to Feb: 2016	Nuisance vehicles [§]	1	1	N/A	0	0	0
Dec 2016 to Feb: 2017		0	0		0	0	0
Dec 2015 to Feb: 2016	Derelict cycles	16	N/A	N/A	N/A	N/A	N/A
Dec 2016 to Feb: 2017		16					
Dec 2015 to Feb: 2016	Domestic waste	52	21	0	9	0	0
Dec 2016 to Feb: 2017		52	7	0	7	0	0
Dec 2015 to Feb: 2016	Trade waste	4	1	0	0	0	0
Dec 2016 to Feb: 2017		3	1	0	0	0	0
Dec 2015 to Feb: 2016	Litter	12	0	0	7	0	0
Dec 2016 to Feb: 2017		4	0	0	3	0	0
Dec 2015 to Feb: 2016	Illegal camping	2	N/A	1	N/A	0	0
Dec 2016 to Feb: 2017		1		1		0	0
Dec 2015 to Feb: 2016	Illegal advertising	0	0	N/A	0	0	0
Dec 2016 to Feb: 2017		0	0		0	0	0

Data is from 1 December to 16 February 2017.

[§] Nuisance vehicles includes vehicles displayed for sale or being repaired (other than in an emergency) on the public highway

Summary of public realm enforcement data

- Of the 40 abandoned vehicles the majority were removed by their owners or claimed within the 7 day notice period. Four abandoned vehicles were seized from Topham Close, Jedburgh Close, Blackthorn Close and Hazelwood Close, of these two vehicles were destroyed when they were not claimed.
- Sixteen derelict cycles were removed from across all four wards. The number of cycles removed as abandoned in the North area usually varies between 15 to 25 a period.
- There were 52 domestic waste investigations conducted in the area, the majority of which was waste littered and fly tipped at recycling centres, bin stores and communal land across the area. Of the investigations conducted there was six community protection warning letters, seven fixed penalties were issued, two for littering and five for fly tipping. Eighteen investigations resulted in untraceable suspects and there are currently fifteen seven ongoing cases awaiting further action.
- There were three cases of trade waste investigated in the North area, in two of the cases no evidence was found and the other case resulted in a written warning.
- There were four cases of litter investigated in the North area and three fixed penalties were issued for littering on Campkin Road and Arbury Court. Two fixed penalty notices have been paid, and one case is ongoing.
- There was one case of illegal camping at St Andrews Street. The occupier of the camp was served a notice and it was not removed by the owner within the 24 hour notice period, and was therefore impounded by the council.

Dog Warden Service [North Area]

Stray dogs

Period	Activity	Number of cases	Rehomed	Destroyed	Claimed	In Kennels	Comment
Dec 2015 to Feb: 2016	Stray dogs	10	0	0	7	3	One other stray dog call was received, but the dog as collected by their owner before the dog warden attended
Dec 2016 to Feb: 2017		8	2	1	2	3	Two other stray dog calls were received, but the dogs were collected by their owner before the dog warden attended

Dog Control Orders

Period	Activity	Investigations	Written Warnings	Statutory Notices	Fixed Penalty Notices	Simple Cautions	Legal Proceedings
Dec 2015 to Feb: 2016	Dog control orders: Fouling	5	0	0	1	0	0
Dec 2016 to Feb: 2017		12	0	0	0	0	0
Dec 2015 to Feb: 2016	Dog control orders: Exclusion	0	0	0	0	0	0
Dec 2016 to Feb: 2017		1	0	0	1	0	0
Dec 2015 to Feb: 2016	Dog control orders: Leads	0	0	0	0	0	0
Dec 2016 to Feb: 2017		0	0	0	0	0	0
Dec 2015 to Feb: 2016	Other dog complaints**	1	0	0	0	0	0
Dec 2016 to Feb: 2017		6	0	0	0	0	0

Data is from 1 December to 16 February

** Includes issues such as barking, welfare, signage requests and educational advice as well as joint working with Environmental Health, RSPCA and Housing Associations'

Operations cleansing data by ward [North Area]

Period	Activity	Total number of incidents	Ward			
			Arbury	East Chesterton	Kings Hedges	West Chesterton
Dec 2015 to Feb: 2016	Fly tipping	147	37	23	70	17
Dec 2016 to Feb: 2017		103	21	14	66	2
Dec 2015 to Feb: 2016	Offensive graffiti ^{††}	3	1	0	1	1
Dec 2016 to Feb: 2017		3	2	0	1	0
Dec 2015 to Feb: 2016	Detrimental graffiti ^{‡‡}	41	9	7	2	23
Dec 2016 to Feb: 2017		6	2	1	1	2
Dec 2015 to Feb: 2016	Needles	2	1	0	1	0
Dec 2016 to Feb: 2017		30	22	4	3	1
Dec 2015 to Feb: 2016	Shopping trolleys	22	6	7	3	6
Dec 2016 to Feb: 2017		7	1	3	2	1

^{††} Offensive graffiti includes but is not limited to that which contains swear words, reference to religion, racist, reference to a person / naming a person, drawings of human body parts, words of reference to human body parts and reference to sexual activity. The service aim is to remove this type of graffiti within 1 working day.

^{‡‡} Detrimental graffiti is graffiti that contains but is not limited to general tags, drawings not falling under the above criteria, and words not classified as offensive. The service aim is to remove this type of graffiti within 5 working days.

Summary of operations cleansing data:

- Of the 21 reports for fly tip in the Arbury ward, three each came from Montgomery Avenue and Alex Wood Road; no other particular trends with types of fly tipped material were identified in this period.
- In East Chesterton, there were repeat incidents at Dundee Close area and no other trends for fly tipping in this ward were identified.
- In Kings Hedges the majority of waste was fly tipped in and around communal areas and recycling areas of the estates. Thirteen fly tips were from Minerva Way, 9 from Cadwin Field / Edgecombe recycling areas and 6 each from Arbury Court and Sackville Close. No patterns of repeat offences have been identified but enforcement and ranger patrols have been increased due to a number of these areas being priority areas to address the problems of fly tipping and as part of a campaign that is currently being run to highlight the issues of fly tipping.
- Two fly tips were removed from West Chesterton. No patterns of repeat offences have been identified.
- Graffiti of detrimental tagging was removed from Hilda St and Histon Road in Arbury ward in February, black paint marks were removed from Green dragon bridge in Water Street in East Chesterton in February 2017 General tagging was removed from a communication box on Markham Close in Kings Hedges in January and general tagging was removed from a wall on Holland St in February and from Cutter Ferry underpass in December 2016.
- Offensive language / swear words were removed from the garage block at Bermuda Terrace in February 2017, and a picture of human anatomy were removed from a wall in Fisher Street in February 2017. In Kings Hedges, offensive wording was removed from garages at Campkin Road in February.
- In Arbury there were three incidents of needles, in Carlyle Road one needle was removed, one needle was removed from behind One Stop on Carlton Road, and twenty needles were removed from a container at Bermuda Road. At Ashfield Road, four needles were found in the car park in East Chesterton. In Kings Hedges there were two instances of needles, one needle was removed from the toilets at Arbury Court, and two needles were removed from a drying area at Minerva Way. In West Chesterton there was one instance of needles where one needle was removed from Garden Walk.
- The number of trolleys impounded by Streets and Open Spaces was 0.

Waste and Recycling Data [City wide]

Waste and recycling data was not available. A full set of quarter 3 and quarter 4 data will be provided in the next report.

6. Proactive and community work

During the period December 2016 to February 2017 the following proactive and community work has been undertaken.

Task	Garden clearances
Action Taken	Two gardens were cutback and cleared in Borrowdale and Brackley Close. These were completed by City Ranger with the help of two individual placements from community payback.
Current Situation	Completed

Task	Arbury Community Centre
Action Taken	City Rangers were helped by a team of community payback to clean up and cutback the grounds of the Arbury Community Centre.
Current Situation	Completed

Task	Bench renovations
Action Taken	Benches in need of repair and renovation throughout the North are being scheduled with the help of Streets and Open Spaces volunteers.
Current Situation	Scheduled

Task	Northfield Avenue Underpass
Action Taken	The ceiling of the Northfield Avenue underpass is scheduled to be painted following last year's ward walkabout.
Current Situation	Scheduled

7. Key contacts

Officers

Area	Contact	Telephone Number	Email
Environmental Health Manager	Yvonne O'Donnell	01223 457951	yvonne.odonnell@cambridge.gov.uk
Senior Operations Manager	Don Blair	01223 458575	Don.blair@cambridge.gov.uk
Operations Manager (Grounds Maintenance)	Paul Jones	01223 458215	Paul.Jones@cambridge.gov.uk
Operations Manager (Community Engagement and Enforcement)	Wendy Young	01223 458578	Wendy.young@cambridge.gov.uk
North Area Ranger: Joe Obe	City Rangers	01223 458282	cityrangers@cambridge.gov.uk
Public Realm Enforcement (Arbury and Kings Hedges)	Lisa Lowndes	01223 458062	streetenforcement@cambridge.gov.uk
Public Realm Enforcement (East and West Chesterton)	Jamie Lambert	01223 457845	
Dog Warden	Samantha Dewing (Mon-Wed)	01223 457883	dogwarden@cambridge.gov.uk
Volunteer opportunities (Streets, Parks and Open Spaces)	Rina Dunning	01223 458084	Caterina.dunning@cambridge.gov.uk
Recycling Champions	Co-ordinator	01223 458240	recycling.champions@cambridge.gov.uk
Out of Hours	Emergency calls	0300 3038389	N/A

Issues

Area	Contact	Telephone Number	Email
Dog fouling Litter Fly tipping (public land) Graffiti Needles Abandoned, untaxed and nuisance vehicles Illegal camping Bulky waste collections New blue, green and black bins Replacement blue, green and black bins Repairs to blue, black and green bins	Customer Service Centre	01223 458282	wasteandstreets@cambridge.gov.uk
Abandoned bicycles	Customer Service Centre	01223 458282	cityrangers@cambridge.gov.uk
Pest Control	Refuse and Environment	01223 457900	env.health@cambridge.gov.uk
Noise			
Stray and lost dogs	Customer Service Centre	01223 457900	dogwarden@cambridge.gov.uk

8. Resources

The following are suggestions that members of the North Area Committee and residents and businesses may wish to consider or request for the upcoming period:

Remaining bins stocks for the city have been reallocated across all wards to ensure that bins are installed where required.

Recycling and general street litter bins

A small quantity of recycling and general street litter bins is available for each ward, as follows:

Ward	Bins used	Bins available for installation
Arbury	9	1
East Chesterton	13	1
Kings Hedges	11	3
West Chesterton	6	3

We would like to receive suggestions for where bins should be installed on the street and will investigate the suitability of all suggested locations. We will also be undertaking a review of where bins are currently installed to see how they are used.

Installed bin sites:

Ward	Location	Installation Date	Comments
West Chesterton	Bateson Road (near to school)	December 2014	
West Chesterton	De Freville Avenue (Chesterton Road bus stop)	December 2014	
West Chesterton	Chesterton Road (near Old Spring)	December 2014	
West Chesterton	Gilbert Road (junction with Milton Road)	March 2015	
West Chesterton	Milton Road (bus stop by Downhams Lane)	December 2015	
West Chesterton	Chesterton Road	December 2015	
Kings Hedges	Kendal Way	December 2014	
Kings Hedges	St Kilda's Avenue (near new bench)	December 2014	
Kings Hedges	Kings Hedges Road (bus stop near Woodhouse Way)	July 2015	
Kings Hedges	Kings Hedges Recreation Ground (by learner pool)	October 2015	
Kings Hedges	Kings Hedges Recreation Ground (near to Woburn Close)	October 2015	
Kings Hedges	Hanson Court	September 2015	2 sets of bins
Kings Hedges	Kings Hedges Road (near to Buchan Street shops)	September 2015	
Kings Hedges	Markham Close (junction of Lavender Road)	September 2015	
Kings Hedges	Hawkins Road (Atkins Road end)	September 2015	
Kings Hedges	Campkin Road (near to bus stop by community centre)	September 2015	
Arbury	Frenches Road (near school cut through to Harvey Goodwin Avenue)	December 2014	
Arbury	Roseford Road (at Perse Way	December 2014	

	junction)		
Arbury	Acton Road (at Perse Way junction)	December 2014	
Arbury	Chesterton Lane (near to Clare Colony)	June 2015	
Arbury	Carlton Way (junction with Hall Farm Road)	June 2015	
Arbury	Chesterton Lane (outside Cripps Court)	August 2015	
Arbury	Verulam Way (through to Aylesborough Close)	September 2015	
Arbury	Alex Wood Road	January 2017	
Arbury	Roland Close	December 2016	
East Chesterton	Hailing Way	March 2015	
East Chesterton	Evergreens (at the end of the road)	December 2014	
East Chesterton	Echo House	December 2014	
East Chesterton	Kinross Road	December 2014	2 sets of bins
East Chesterton	Edinburgh Road	December 2014	
East Chesterton	Green End Road (near Grumpys)	March 2015	2 sets of bins
East Chesterton	Green End Road (between Sherbourne Close and Co-op)	December 2014	
East Chesterton	Cowley Road (near bridge)	July 2015	
East Chesterton	Sherbourne Close	February 2015	
East Chesterton	Laxton Way (near to school entrance)	December 2016	
East Chesterton	High Street (Water corner next to bus stop)	December 2016	

Dog bin provision

A number of dog bins are available for each ward, as follows:

Ward	Bins used	Bins available for installation
Arbury	5	0
East Chesterton	3	2
Kings Hedges	4	1
West Chesterton	0	1

We would like to receive suggestions for where bins should be installed on the parks and open spaces and will investigate the suitability of all suggested locations. We will also be undertaking a review of where bins are currently installed to see how they are used.

Installed bin sites:

Ward	Location	Installation Date	Comments
Kings Hedges	Campkin Road (Hawkins Road green area)	December 2014	
Kings Hedges	Buchan Street (Callander Close area)	March 2016	
Kings Hedges	Larkin Close	March 2016	
Kings Hedges	Augustus Close	August 2016	
East Chesterton	Pyes Pitch	May 2015	
East Chesterton	Union Lane (junction with Milton Road)	December 2014	
East Chesterton	Logan's Meadow	December 2014	
Arbury	Bateson Road (near green	September 2015	

	space)		
Arbury	Perse Way (footpath through to Ferrars Way)	September 2015	
Arbury	Perse Way (footpath through to Cockerell Road)	September 2015	
Arbury	Hall Farm Road	September 2015	
Arbury	Fortescue Road	February 2017	

Pocket ashtray distribution

Locations of where pocket ashtrays should be distributed from are welcomed by the Public Realm Enforcement team.

Dog fouling signs

Small quantities of 'no dog fouling' signs are available for each ward, as follows:

Ward	Signs used	Signs available for installation
Arbury	0	13
East Chesterton	2	11
Kings Hedges	1	12
West Chesterton	0	13



Community Events and Information

This item is included for information only and there will be no discussion of the items below.

Chesterton Choral Society Concert "Let there be light" at Brickfields House (City Church) 15-16 Cheddars Lane, CB5 8LD on Monday 3rd April at 7.30 pm. Tickets £7 (over 60s and unwaged £5), family ticket £15. Phone 01223 243190.

Chesterton Festival will run from 16th to 25th June. Family Fun Day on 17th June form 1-5 pm on Chesterton Recreation Ground in Church Street, Flower Festival in Church and teas in St Andrew's Hall.

Story Sharing (for children) at Milton Road Library every 2nd and 4th Saturday of the month 10.30-11.30 enquiries to fmr.library@gmail.com

Talk "The Search for Thomas Farrer" by Michael Bond at Milton Road Library Thursday 9th March at 7.30pm

Open Mind events

Visit to Norwich cathedral on Thursday 27th April 2017 leaves Chesterton at 9 am arriving in time for a guided tour at 11.30 (1hr), there is a concert at 1.10pm with a retiring collection and time for a mooch around Norwich before heading for home.

Cost for coach and guided tour £20 - bokk by E-mail to Rachel Clarke at rachel@standrews-hall.co.uk or phone 306150 or by letter to St Andrew's Hall, St Adnrew's Road, Chesterton CB 1DH

Visit to the Henry Moore Foundation on Thursday 6th July full details in June edition of Chesterton News.

Consultation Opportunities

The following link will take you to current consultation opportunities.

www.cambridge.gov.uk/current-consultations

These include:

Have you say on: -

Consultation on the proposed designation of a South Newnham neighbourhood area and forum

Consultation runs from

20 January 2017, 9:00am to 6 March 2017, 5:00pm

Pictorial Meadows Consultation

Consultation runs from

7 February 2017, 12:00pm to 27 February 2017, 12:00pm

Introduction and background

Cambridge City Council is consulting on a proposal to establish two additional colourful meadows of annual flowers on Chesterton Recreation Ground and Parkers Piece this summer.

Full details of current consultations can be found on our website

<https://www.cambridge.gov.uk/current-consultations>

Please contact Democratic Services to add you community event to this page: Democrtic.services@cambridge.gov.uk